

DC-LAMP Polyclonal Antibody

Catalog No: #46777

Package Size: #46777-1 50ul #46777-2 100ul

Orders: order@signalwayantibody.com

Support: tech@signalwayantibody.com

Description

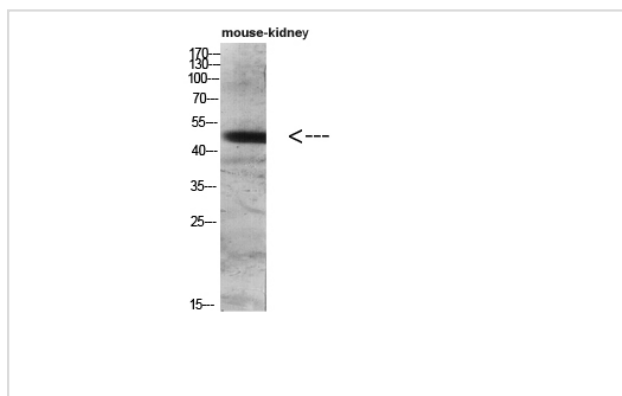
Product Name	DC-LAMP Polyclonal Antibody
Host Species	Rabbit
Clonality	Polyclonal
Purification	The antibody was affinity-purified from rabbit serum by affinity-chromatography using specific immunogen.
Applications	WB IHC
Species Reactivity	Hu
Specificity	The antibody detects endogenous DC-LAMP
Immunogen Type	protein
Immunogen Description	Synthetic peptide from human protein at AA range: 261-310
Target Name	DC-LAMP
Other Names	Lysosome-associated membrane glycoprotein 3 (LAMP-3) (Lysosomal-associated membrane protein 3) (DC-lysosome-associated membrane glycoprotein) (DC LAMP) (Protein TSC403) (CD antigen CD208)
Accession No.	Swiss-Prot:Q9UQV4NCBI Gene ID:27074
Uniprot	Q9UQV4
GeneID	27074;
Calculated MW	44 kDa
Concentration	1 mg/ml
Formulation	Liquid in PBS containing 50% glycerol, 0.5% BSA and 0.02% sodium azide.
Storage	Store at -20°C

Application Details

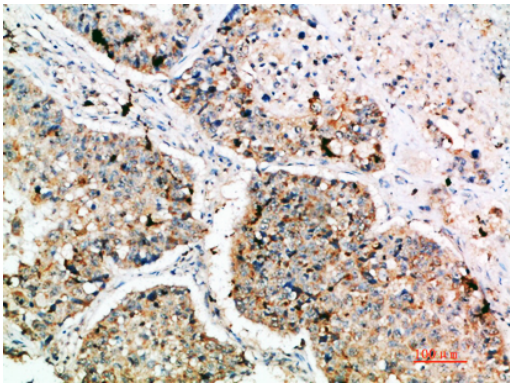
Western blotting: 1B£B1500-1B£B12000

Immunohistochemistry: IHC 1:50-300

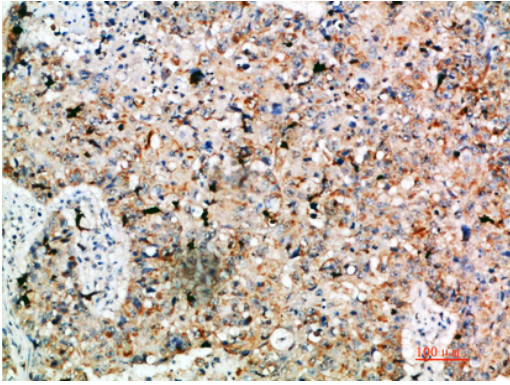
Images



Western blot analysis of mouse-lung mouse-heart 293T Hela 3T3 lysate, antibody was diluted at 500. Secondary antibody was diluted at 1:20000



Immunohistochemical analysis of paraffin-embedded human-lung-cancer, antibody was diluted at 1:200



Immunohistochemical analysis of paraffin-embedded human-lung-cancer, antibody was diluted at 1:200

Note: This product is for in vitro research use only