

Gremlin-2 Polyclonal Antibody

Catalog No: #46779

Package Size: #46779-1 50ul #46779-2 100ul

Orders: order@signalwayantibody.com

Support: tech@signalwayantibody.com

Description

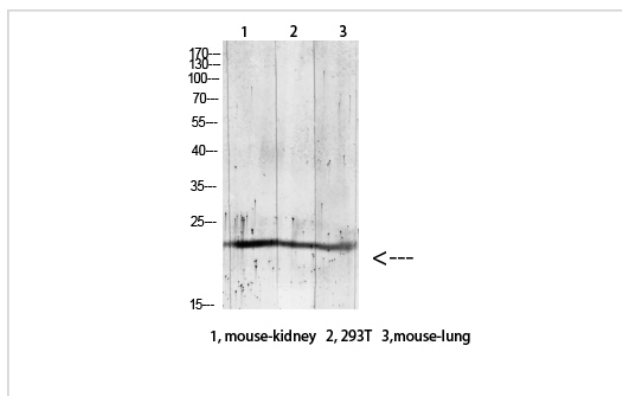
Product Name	Gremlin-2 Polyclonal Antibody
Host Species	Rabbit
Clonality	Polyclonal
Purification	The antibody was affinity-purified from rabbit serum by affinity-chromatography using specific immunogen.
Applications	WB IHC
Species Reactivity	Hu Ms
Specificity	The antibody detects endogenous Gremlin-2
Immunogen Type	protein
Immunogen Description	Synthetic peptide from human protein at AA range: 71-120
Target Name	Gremlin-2
Other Names	Gremlin-2 (Cysteine knot superfamily 1, BMP antagonist 2) (DAN domain family member 3) (Protein related to DAN and cerberus)
Accession No.	Swiss-Prot:Q9H772NCBI Gene ID:64388
Uniprot	Q9H772
GeneID	64388;
Calculated MW	19 kDa
Concentration	1 mg/ml
Formulation	Liquid in PBS containing 50% glycerol, 0.5% BSA and 0.02% sodium azide.
Storage	Store at -20°C

Application Details

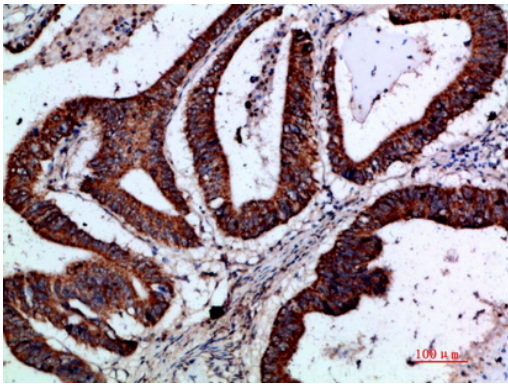
Western blotting: 1B£B'1500-1B£B'12000

Immunohistochemistry: IHC 1:50-300

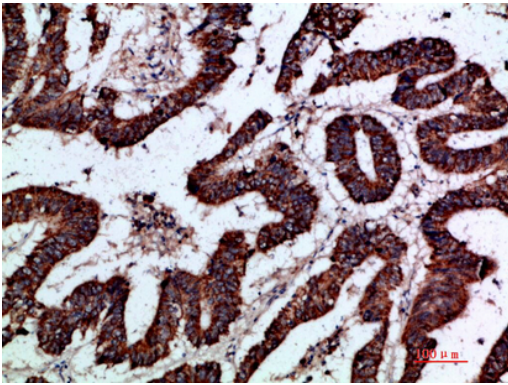
Images



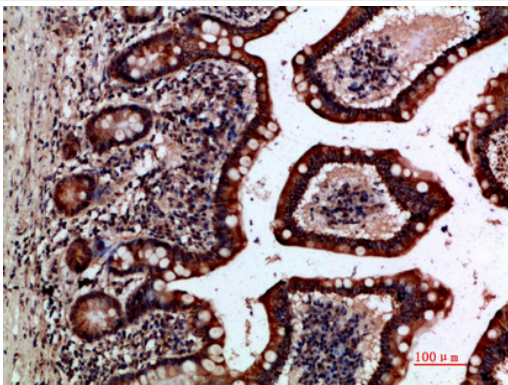
Western blot analysis of RAT-brain lysate, antibody was diluted at 1000. Secondary antibody was diluted at 1:20000



Immunohistochemical analysis of paraffin-embedded human-colon-cancer, antibody was diluted at 1:200



Immunohistochemical analysis of paraffin-embedded human-colon-cancer, antibody was diluted at 1:200



Immunohistochemical analysis of paraffin-embedded human-small-intestine, antibody was diluted at 1:200

Note: This product is for in vitro research use only