

## Cytokeratin?4 Polyclonal Antibody

Catalog No: #46782

Package Size: #46782-1 50ul #46782-2 100ul

Orders: order@signalwayantibody.com

Support: tech@signalwayantibody.com

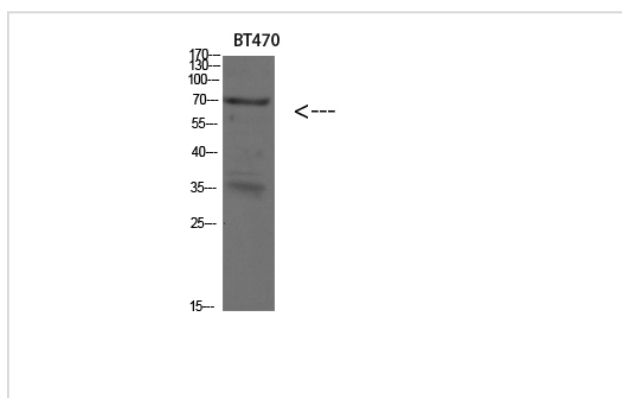
## Description

Product Name	Cytokeratin?4 Polyclonal Antibody
Host Species	Rabbit
Clonality	Polyclonal
Purification	The antibody was affinity-purified from rabbit serum by affinity-chromatography using specific immunogen.
Applications	WB
Species Reactivity	Hu Ms Rt
Specificity	The antibody detects endogenous Cytokeratin?4
Immunogen Description	Synthetic peptide from human protein at AA range: 200-260
Target Name	Cytokeratin?4
Other Names	Keratin, type II cytoskeletal 4 (Cytokeratin-4) (CK-4) (Keratin-4) (K4) (Type-II keratin Kb4)
Accession No.	Swiss-Prot:P19013NCBI Gene ID:3851
Uniprot	P19013
GeneID	3851;
Calculated MW	57 kDa
Concentration	1 mg/ml
Formulation	Liquid in PBS containing 50% glycerol, 0.5% BSA and 0.02% sodium azide.
Storage	Store at -20°C

## Application Details

Western blotting: 1&amp;pound;&amp;ordm;500-1&amp;pound;&amp;ordm;2000

## Images



Western blot analysis of SKOV3 293T lysate, antibody was diluted at 500. Secondary antibody was diluted at 1:20000

Note: This product is for in vitro research use only