

## DAAM1 Polyclonal Antibody

Catalog No: #46785

Package Size: #46785-1 50ul #46785-2 100ul

Orders: order@signalwayantibody.com

Support: tech@signalwayantibody.com

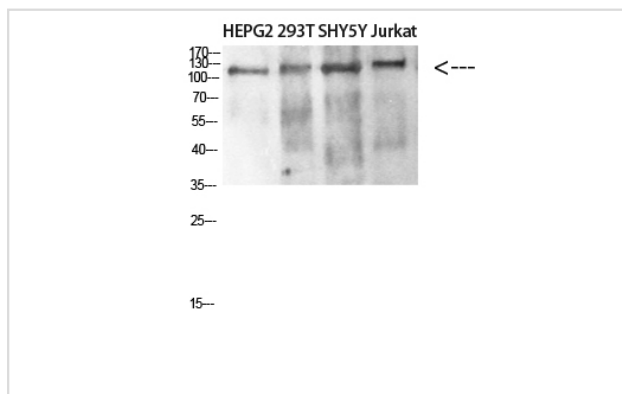
## Description

|                       |   |
|-----------------------|---|
| Product Name          | DAAM1 Polyclonal Antibody   |
| Host Species          | Rabbit  |
| Clonality             | Polyclonal  |
| Purification          | The antibody was affinity-purified from rabbit serum by affinity-chromatography using specific immunogen. |
| Applications          | WB  |
| Species Reactivity    | Hu Ms   |
| Specificity           | The antibody detects endogenous DAAM1   |
| Immunogen Type        | protein   |
| Immunogen Description | Synthetic peptide from human protein at AA range: 400-500   |
| Target Name           | DAAM1   |
| Other Names           | Disheveled-associated activator of morphogenesis 1  |
| Accession No.         | Swiss-Prot:Q9Y4D1NCBI Gene ID:23002   |
| Uniprot               | Q9Y4D1  |
| GeneID                | 23002;  |
| Calculated MW         | 123 kDa   |
| Concentration         | 1 mg/ml   |
| Formulation           | Liquid in PBS containing 50% glycerol, 0.5% BSA and 0.02% sodium azide.                                   |
| Storage               | Store at -20°C  |

## Application Details

Western blotting: 1B£B1500-1B£B12000

## Images



Western blot analysis of SW480 MCF7 lysate, antibody was diluted at 500. Secondary antibody was diluted at 1:20000

---

Note: This product is for in vitro research use only