

DDT Polyclonal Antibody

Catalog No: #46788

Package Size: #46788-1 50ul #46788-2 100ul

Orders: order@signalwayantibody.comSupport: tech@signalwayantibody.com

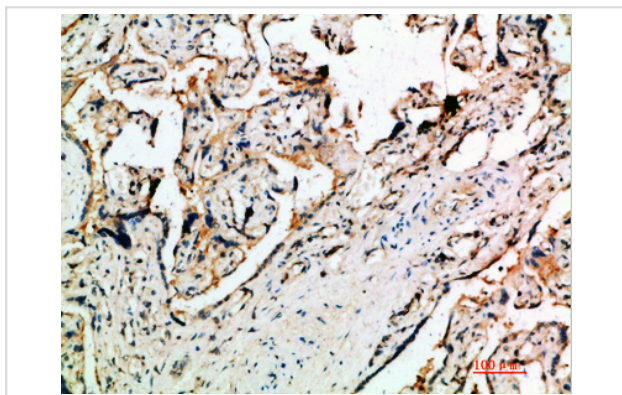
Description

Product Name	DDT Polyclonal Antibody
Host Species	Rabbit
Clonality	Polyclonal
Purification	The antibody was affinity-purified from rabbit serum by affinity-chromatography using specific immunogen.
Applications	IHC
Species Reactivity	Hu Ms Rt
Specificity	The antibody detects endogenous DDT
Immunogen Type	protein
Immunogen Description	Synthetic peptide from human protein at AA range: 50-90
Target Name	DDT
Other Names	D-dopachrome decarboxylase (EC 4.1.1.84) (D-dopachrome tautomerase) (Phenylpyruvate tautomerase II)
Accession No.	Swiss-Prot:P30046NCBI Gene ID:1652
Uniprot	P30046
GeneID	1652;
Concentration	1 mg/ml
Formulation	Liquid in PBS containing 50% glycerol, 0.5% BSA and 0.02% sodium azide.
Storage	Store at -20°C

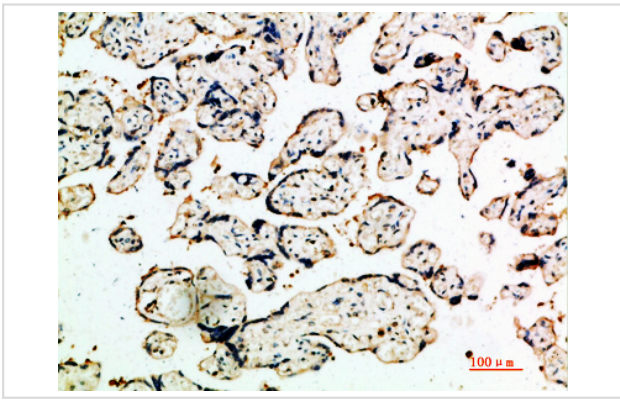
Application Details

Immunohistochemistry: IHC 1:50-300

Images



Immunohistochemical analysis of paraffin-embedded human-placenta, antibody was diluted at 1:200



Immunohistochemical analysis of paraffin-embedded human-placenta, antibody was diluted at 1:200

Note: This product is for in vitro research use only