

IFN- $\alpha$ / $\beta$ R $\alpha$  Polyclonal Antibody

Catalog No: #46789

Package Size: #46789-1 50ul #46789-2 100ul

Orders: [order@signalwayantibody.com](mailto:order@signalwayantibody.com)Support: [tech@signalwayantibody.com](mailto:tech@signalwayantibody.com)

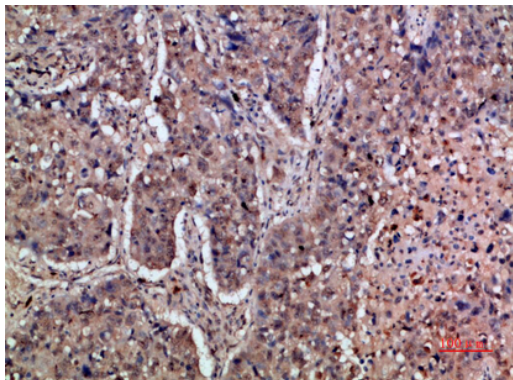
## Description

Product Name	IFN- $\alpha$ / $\beta$ R $\alpha$ Polyclonal Antibody
Host Species	Rabbit
Clonality	Polyclonal
Purification	The antibody was affinity-purified from rabbit serum by affinity-chromatography using specific immunogen.
Applications	IHC
Species Reactivity	Hu
Specificity	The antibody detects endogenous IFN- $\alpha$ / $\beta$ R $\alpha$
Immunogen Type	protein
Immunogen Description	Synthetic peptide from human protein at AA range: 300-350
Target Name	IFN- $\alpha$ / $\beta$ R $\alpha$
Other Names	Interferon alpha/beta receptor 1 (IFN-R-1) (IFN-alpha/beta receptor 1) (Cytokine receptor class-II member 1) (Cytokine receptor family 2 member 1) (CRF2-1) (Type I interferon receptor 1)
Accession No.	Swiss-Prot:P17181NCBI Gene ID:3454
Uniprot	P17181
GeneID	3454;
Concentration	1 mg/ml
Formulation	Liquid in PBS containing 50% glycerol, 0.5% BSA and 0.02% sodium azide.
Storage	Store at -20°C

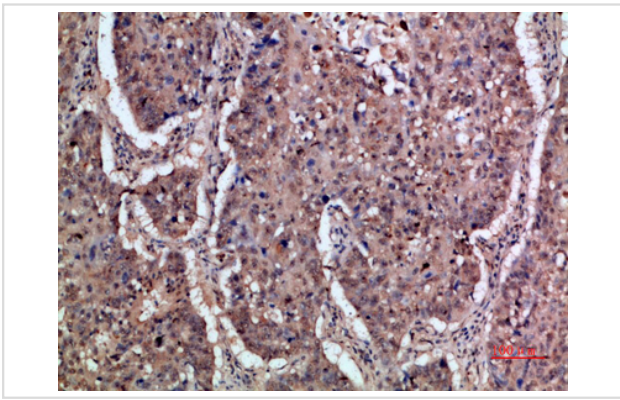
## Application Details

Immunohistochemistry: IHC 1:50-300

## Images



Immunohistochemical analysis of paraffin-embedded human-lung-cancer, antibody was diluted at 1:200



Immunohistochemical analysis of paraffin-embedded human-lung-cancer, antibody was diluted at 1:200

---

Note: This product is for in vitro research use only