

INSL3 Polyclonal Antibody

Catalog No: #46793

Package Size: #46793-1 50ul #46793-2 100ul

Orders: order@signalwayantibody.comSupport: tech@signalwayantibody.com

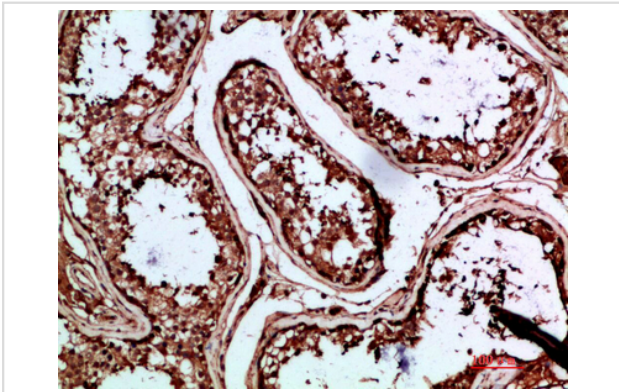
Description

| | |
|-----------------------|---|
| Product Name | INSL3 Polyclonal Antibody |
| Host Species | Rabbit |
| Clonality | Polyclonal |
| Purification | The antibody was affinity-purified from rabbit serum by affinity-chromatography using specific immunogen. |
| Applications | IHC |
| Species Reactivity | Hu |
| Specificity | The antibody detects endogenous INSL3 |
| Immunogen Type | protein |
| Immunogen Description | Synthetic peptide from human protein at AA range: 10-50 |
| Target Name | INSL3 |
| Other Names | Insulin-like 3 (Leydig insulin-like peptide) (Ley-I-L) (Relaxin-like factor) [Cleaved into: Insulin-like 3 B chain; Insulin-like 3 A chain] |
| Accession No. | Swiss-Prot:P51460NCBI Gene ID:3640 |
| Uniprot | P51460 |
| GeneID | 3640; |
| Concentration | 1 mg/ml |
| Formulation | Liquid in PBS containing 50% glycerol, 0.5% BSA and 0.02% sodium azide. |
| Storage | Store at -20°C |

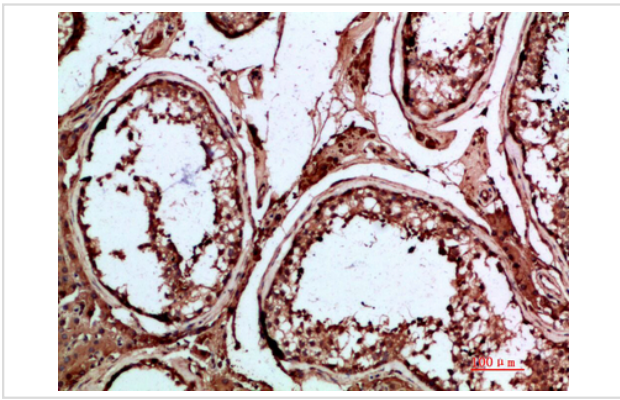
Application Details

Immunohistochemistry: IHC 1:50-300

Images



Immunohistochemical analysis of paraffin-embedded human-testis, antibody was diluted at 1:200



Immunohistochemical analysis of paraffin-embedded human-testis, antibody was diluted at 1:200

Note: This product is for in vitro research use only