

CD137 Polyclonal Antibody

Catalog No: #46811

Package Size: #46811-1 50ul #46811-2 100ul

Orders: order@signalwayantibody.comSupport: tech@signalwayantibody.com

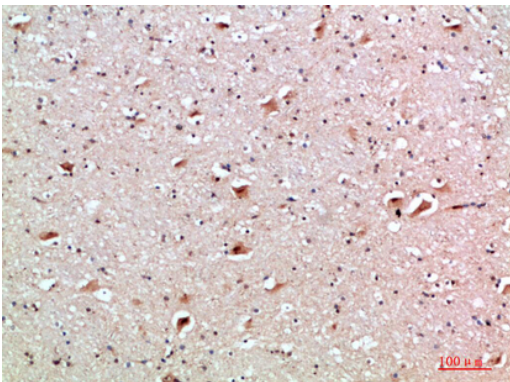
Description

| | |
|-----------------------|---|
| Product Name | CD137 Polyclonal Antibody |
| Host Species | Rabbit |
| Clonality | Polyclonal |
| Purification | The antibody was affinity-purified from rabbit serum by affinity-chromatography using specific immunogen. |
| Applications | IHC |
| Species Reactivity | Hu |
| Specificity | The antibody detects endogenous CD137 |
| Immunogen Type | protein |
| Immunogen Description | Synthetic peptide from human protein at AA range: 111-160 |
| Target Name | CD137 |
| Other Names | Tumor necrosis factor receptor superfamily member 9 (4-1BB ligand receptor) (CDw137) (T-cell antigen 4-1BB homolog) (T-cell antigen ILA) (CD antigen CD137) |
| Accession No. | Swiss-Prot:Q07011NCBI Gene ID:3604 |
| Uniprot | Q07011 |
| GeneID | 3604; |
| Concentration | 1 mg/ml |
| Formulation | Liquid in PBS containing 50% glycerol, 0.5% BSA and 0.02% sodium azide. |
| Storage | Store at -20°C |

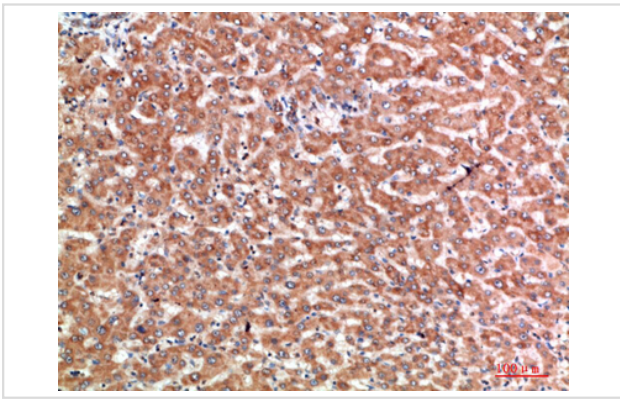
Application Details

Immunohistochemistry: IHC 1:50-300

Images



Immunohistochemical analysis of paraffin-embedded human-brain, antibody was diluted at 1:200



Immunohistochemical analysis of paraffin-embedded human-liver-cancer, antibody was diluted at 1:200

Note: This product is for in vitro research use only