

## CD158f1/2 Polyclonal Antibody

Catalog No: #46818

Package Size: #46818-1 50ul #46818-2 100ul

Orders: [order@signalwayantibody.com](mailto:order@signalwayantibody.com)Support: [tech@signalwayantibody.com](mailto:tech@signalwayantibody.com)

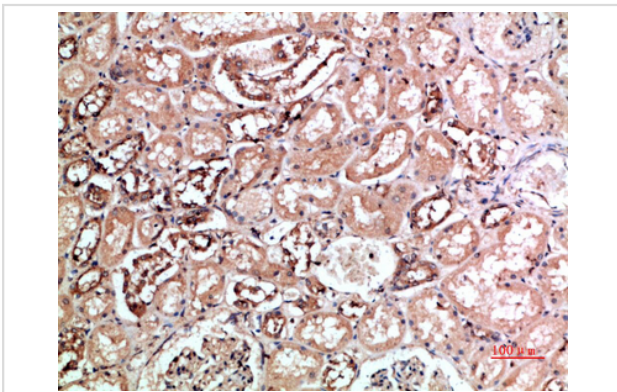
## Description

Product Name	CD158f1/2 Polyclonal Antibody
Host Species	Rabbit
Clonality	Polyclonal
Purification	The antibody was affinity-purified from rabbit serum by affinity-chromatography using specific immunogen.
Applications	IHC
Species Reactivity	Hu
Specificity	The antibody detects endogenous CD158f1/2
Immunogen Type	protein
Immunogen Description	Synthetic peptide from human protein at AA range: 121-170
Target Name	CD158f1/2
Accession No.	Swiss-Prot:Q8N109/Q8NHK3NCBI Gene ID:57292
Uniprot	Q8N109
GeneID	57292;
Concentration	1 mg/ml
Formulation	Liquid in PBS containing 50% glycerol, 0.5% BSA and 0.02% sodium azide.
Storage	Store at -20°C

## Application Details

Immunohistochemistry: IHC 1:50-300

## Images



Immunohistochemical analysis of paraffin-embedded human-kidney, antibody was diluted at 1:200

Note: This product is for in vitro research use only