

CD218b Polyclonal Antibody

Catalog No: #46821

Package Size: #46821-1 50ul #46821-2 100ul

Orders: order@signalwayantibody.comSupport: tech@signalwayantibody.com

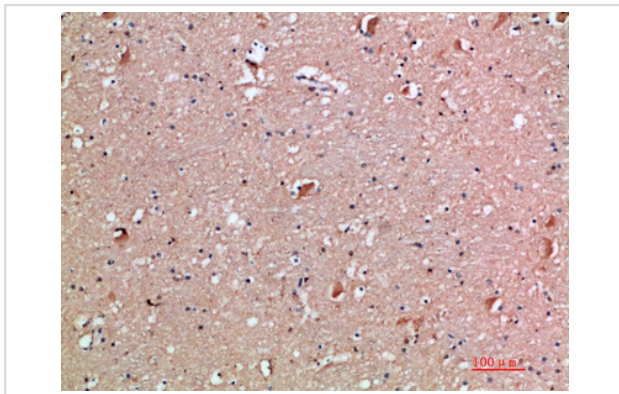
Description

| | |
|-----------------------|--|
| Product Name | CD218b Polyclonal Antibody |
| Host Species | Rabbit |
| Clonality | Polyclonal |
| Purification | The antibody was affinity-purified from rabbit serum by affinity-chromatography using specific immunogen. |
| Applications | IHC |
| Species Reactivity | Hu |
| Specificity | The antibody detects endogenous CD218b |
| Immunogen Type | protein |
| Immunogen Description | Synthetic peptide from human protein at AA range: 291-340 |
| Target Name | CD218b |
| Other Names | Interleukin-18 receptor accessory protein (IL-18 receptor accessory protein) (IL-18RacP) (Accessory protein-like) (AcPL) (CD218 antigen-like family member B) (CDw218b) (IL-1R accessory protein-like) (IL-1RacPL) (Interleukin-1 receptor 7) (IL-1R-7) (IL-1R7) (Interleukin-18 receptor accessory protein- |
| Accession No. | Swiss-Prot:O95256NCBI Gene ID:8807 |
| Uniprot | O95256 |
| GeneID | 8807; |
| Concentration | 1 mg/ml |
| Formulation | Liquid in PBS containing 50% glycerol, 0.5% BSA and 0.02% sodium azide. |
| Storage | Store at -20°C |

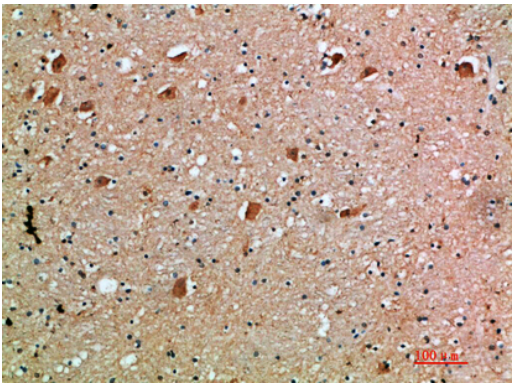
Application Details

Immunohistochemistry: IHC 1:50-300

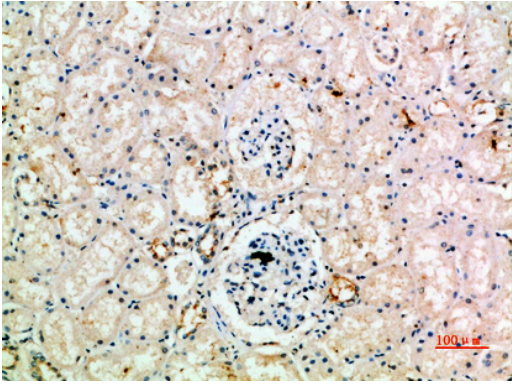
Images



Immunohistochemical analysis of paraffin-embedded human-brain, antibody was diluted at 1:200



Immunohistochemical analysis of paraffin-embedded human-brain, antibody was diluted at 1:200



Immunohistochemical analysis of paraffin-embedded human-kidney, antibody was diluted at 1:200

Note: This product is for in vitro research use only