

BTN3A1/2/3 Polyclonal Antibody

Catalog No: #46829

Package Size: #46829-1 50ul #46829-2 100ul

Orders: order@signalwayantibody.comSupport: tech@signalwayantibody.com

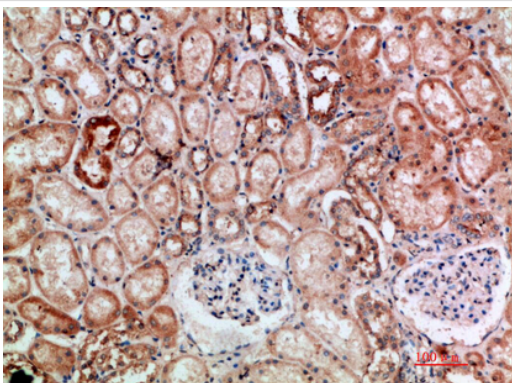
Description

Product Name	BTN3A1/2/3 Polyclonal Antibody
Host Species	Rabbit
Clonality	Polyclonal
Purification	The antibody was affinity-purified from rabbit serum by affinity-chromatography using specific immunogen.
Applications	IHC
Species Reactivity	Hu
Specificity	The antibody detects endogenous BTN3A1/2/3
Immunogen Type	protein
Immunogen Description	Synthetic peptide from human protein at AA range: 41-90
Target Name	BTN3A1/2/3
Accession No.	Swiss-Prot:O00481/P78410/O00478NCBI Gene ID:11119
Uniprot	O00481
GeneID	11119;
Concentration	1 mg/ml
Formulation	Liquid in PBS containing 50% glycerol, 0.5% BSA and 0.02% sodium azide.
Storage	Store at -20°C

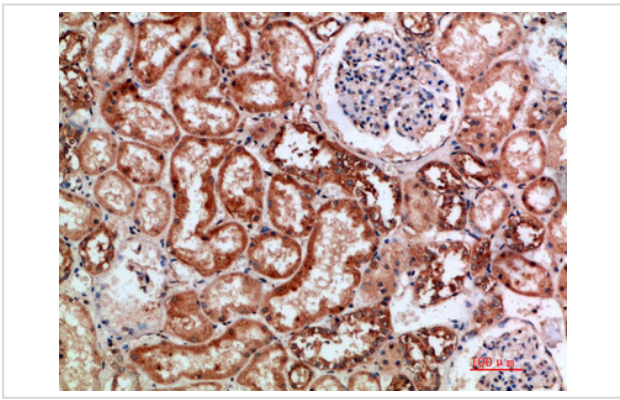
Application Details

Immunohistochemistry: IHC 1:50-300

Images



Immunohistochemical analysis of paraffin-embedded human-kidney, antibody was diluted at 1:200



Immunohistochemical analysis of paraffin-embedded human-kidney, antibody was diluted at 1:200

Note: This product is for in vitro research use only