

ENA-78 Polyclonal Antibody

Catalog No: #46841

Package Size: #46841-1 50ul #46841-2 100ul

Orders: order@signalwayantibody.comSupport: tech@signalwayantibody.com

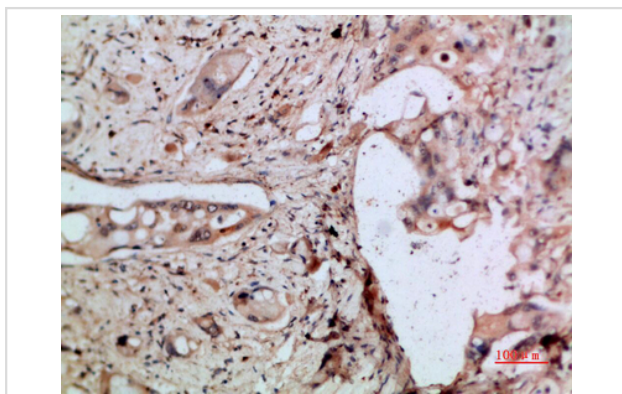
Description

Product Name	ENA-78 Polyclonal Antibody
Host Species	Rabbit
Clonality	Polyclonal
Purification	The antibody was affinity-purified from rabbit serum by affinity-chromatography using specific immunogen.
Applications	IHC
Species Reactivity	Hu
Specificity	The antibody detects endogenous ENA-78
Immunogen Type	protein
Immunogen Description	Synthetic peptide from human protein at AA range: 65-114
Target Name	ENA-78
Other Names	C-X-C motif chemokine 5 (ENA-78(1-78)) (Epithelial-derived neutrophil-activating protein 78) (Neutrophil-activating peptide ENA-78) (Small-inducible cytokine B5) [Cleaved into: ENA-78(8-78); ENA-78(9-78)]
Accession No.	Swiss-Prot:P42830NCBI Gene ID:6374
Uniprot	P42830
GeneID	6374;
Concentration	1 mg/ml
Formulation	Liquid in PBS containing 50% glycerol, 0.5% BSA and 0.02% sodium azide.
Storage	Store at -20°C

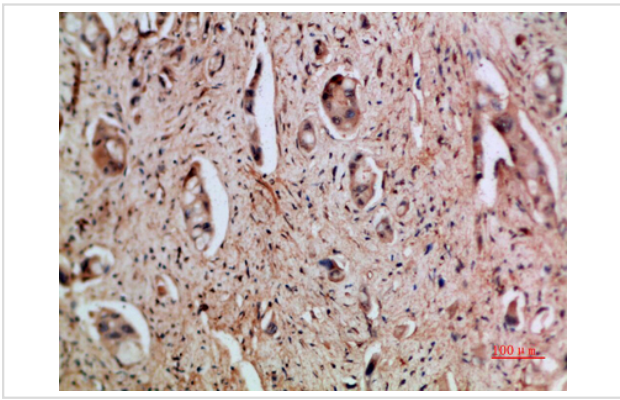
Application Details

Immunohistochemistry: IHC 1:50-300

Images



Immunohistochemical analysis of paraffin-embedded human-pancreas-cancer, antibody was diluted at 1:200



Immunohistochemical analysis of paraffin-embedded human-pancreas-cancer, antibody was diluted at 1:200

Note: This product is for in vitro research use only