

GRO γ Polyclonal Antibody

Catalog No: #46848

Package Size: #46848-1 50ul #46848-2 100ul

Orders: order@signalwayantibody.comSupport: tech@signalwayantibody.com

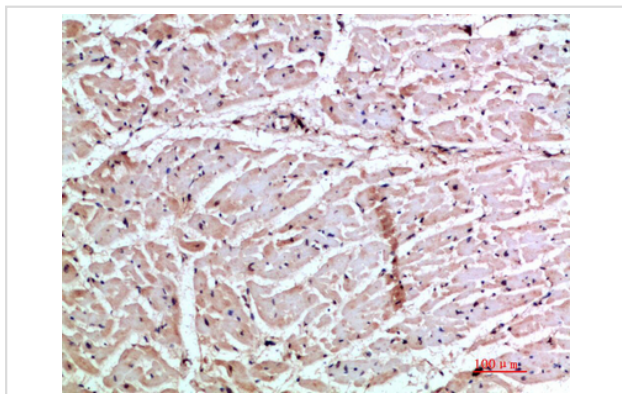
Description

Product Name	GRO γ Polyclonal Antibody
Host Species	Rabbit
Clonality	Polyclonal
Purification	The antibody was affinity-purified from rabbit serum by affinity-chromatography using specific immunogen.
Applications	IHC
Species Reactivity	Hu
Specificity	The antibody detects endogenous GRO γ
Immunogen Type	protein
Immunogen Description	Synthetic peptide from human protein at AA range: 58-107
Target Name	GRO γ
Other Names	C-X-C motif chemokine 3 (GRO-gamma(1-73)) (Growth-regulated protein gamma) (GRO-gamma) (Macrophage inflammatory protein 2-beta) (MIP2-beta) [Cleaved into: GRO-gamma(5-73)]
Accession No.	Swiss-Prot:P19876NCBI Gene ID:2921
Uniprot	P19876
GeneID	2921;
Concentration	1 mg/ml
Formulation	Liquid in PBS containing 50% glycerol, 0.5% BSA and 0.02% sodium azide.
Storage	Store at -20°C

Application Details

Immunohistochemistry: IHC 1:50-300

Images



Immunohistochemical analysis of paraffin-embedded human-heart, antibody was diluted at 1:200

Note: This product is for in vitro research use only