

BMP-1 Polyclonal Antibody

Catalog No: #46855

Package Size: #46855-1 50ul #46855-2 100ul

Orders: order@signalwayantibody.com

Support: tech@signalwayantibody.com

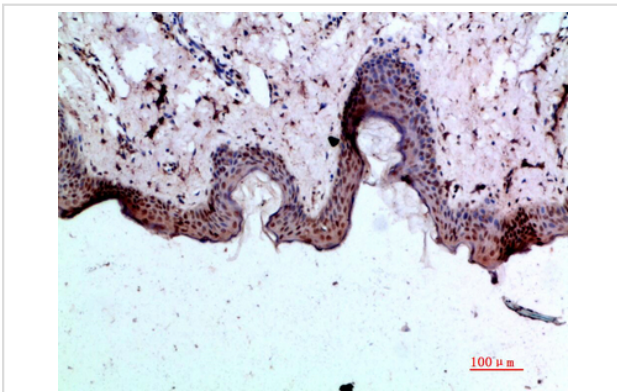
Description

Product Name	BMP-1 Polyclonal Antibody
Host Species	Rabbit
Clonality	Polyclonal
Purification	The antibody was affinity-purified from rabbit serum by affinity-chromatography using specific immunogen.
Applications	IHC
Species Reactivity	Hu Ms Rt
Specificity	The antibody detects endogenous BMP-1
Immunogen Type	protein
Immunogen Description	Synthetic peptide from human protein at AA range: 131-180
Target Name	BMP-1
Other Names	Bone morphogenetic protein 1 (BMP-1) (EC 3.4.24.19) (Mammalian tolloid protein) (mTld) (Procollagen C-proteinase) (PCP)
Accession No.	Swiss-Prot:P13497NCBI Gene ID:649
Uniprot	P13497
GeneID	649;
Concentration	1 mg/ml
Formulation	Liquid in PBS containing 50% glycerol, 0.5% BSA and 0.02% sodium azide.
Storage	Store at -20°C

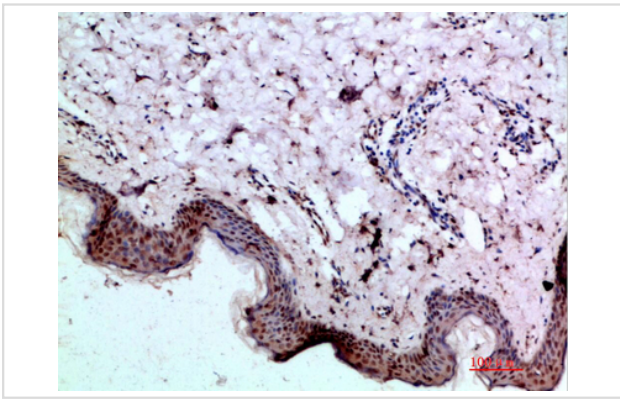
Application Details

Immunohistochemistry: IHC 1:50-300

Images



Immunohistochemical analysis of paraffin-embedded human-skin, antibody was diluted at 1:200



Immunohistochemical analysis of paraffin-embedded human-skin, antibody was diluted at 1:200

Note: This product is for in vitro research use only