

## IgD Polyclonal Antibody

Catalog No: #46857

Package Size: #46857-1 50ul #46857-2 100ul

Orders: [order@signalwayantibody.com](mailto:order@signalwayantibody.com)Support: [tech@signalwayantibody.com](mailto:tech@signalwayantibody.com)

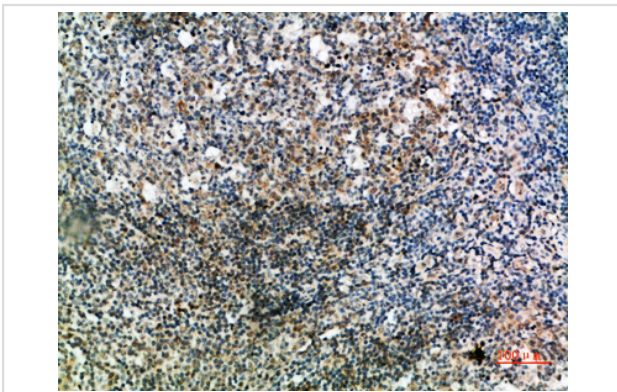
## Description

Product Name	IgD Polyclonal Antibody
Host Species	Rabbit
Clonality	Polyclonal
Purification	The antibody was affinity-purified from rabbit serum by affinity-chromatography using specific immunogen.
Applications	IHC
Species Reactivity	Hu
Specificity	The antibody detects endogenous IgD
Immunogen Description	Synthetic peptide from human protein at AA range: 111-160
Target Name	IgD
Other Names	Ig delta chain C region
Accession No.	Swiss-Prot:P01880NCBI Gene ID:3495
Uniprot	P01880
GeneID	3495;
Concentration	1 mg/ml
Formulation	Liquid in PBS containing 50% glycerol, 0.5% BSA and 0.02% sodium azide.
Storage	Store at -20°C

## Application Details

Immunohistochemistry: IHC 1:50-300

## Images



Immunohistochemical analysis of paraffin-embedded human-tonsil, antibody was diluted at 1:200

Note: This product is for in vitro research use only