

E2F-1 Polyclonal Antibody

Catalog No: #46889

Package Size: #46889-1 50ul #46889-2 100ul

Orders: order@signalwayantibody.com

Support: tech@signalwayantibody.com

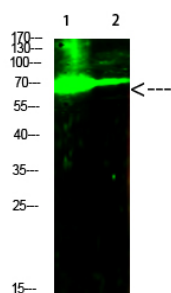
Description

| | |
|-----------------------|---|
| Product Name | E2F-1 Polyclonal Antibody |
| Host Species | Rabbit |
| Clonality | Polyclonal |
| Purification | The antibody was affinity-purified from rabbit antiserum by affinity-chromatography using epitope-specific immunogen. |
| Applications | WB |
| Species Reactivity | Hu Ms Rt |
| Specificity | This antibody detects endogenous levels of E2F-1 |
| Immunogen Type | protein |
| Immunogen Description | Synthesized peptide derived from human E2F-1. at AA range: 100-140 |
| Target Name | E2F-1 |
| Other Names | Transcription factor E2F1 (E2F-1) (PBR3) (Retinoblastoma-associated protein 1) (RBAP-1) (Retinoblastoma-binding protein 3) (RBBP-3) (pRB-binding protein E2F-1) |
| Accession No. | Swiss-Prot:Q01094NCBI Gene ID:1869 |
| Uniprot | Q01094 |
| GeneID | 1869; |
| Calculated MW | 70 kDa |
| Concentration | 1 mg/ml |
| Formulation | Liquid in PBS containing 50% glycerol, 0.5% BSA and 0.02% sodium azide. |
| Storage | Store at -20°C |

Application Details

Western blotting: 1B£B1500-1B£B12000

Images



Western Blot analysis of 1,mouse-heart 2,hela cells using primary antibody diluted at 1:1000(°C overnight). Secondary antibodyB£B1Goat Anti-rabbit IgG IRDye 800(diluted at 1:5000, 25B'Γ£C, 1 hour)

Note: This product is for in vitro research use only