

## GI Syn Polyclonal Antibody

Catalog No: #46893

Package Size: #46893-1 50ul #46893-2 100ul

Orders: order@signalwayantibody.com

Support: tech@signalwayantibody.com

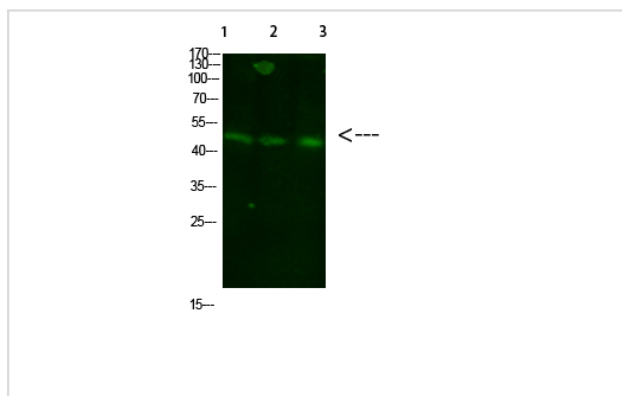
## Description

Product Name	GI Syn Polyclonal Antibody
Host Species	Rabbit
Clonality	Polyclonal
Purification	The antibody was affinity-purified from rabbit antiserum by affinity-chromatography using epitope-specific immunogen.
Applications	WB
Species Reactivity	Hu Ms Rt
Specificity	This antibody detects endogenous levels of GI Syn
Immunogen Type	protein
Immunogen Description	Synthesized peptide derived from human GI Syn. at AA range: 301-350
Target Name	GI Syn
Other Names	Glutamine synthetase (GS) (EC 6.3.1.2) (Glutamate decarboxylase) (EC 4.1.1.15) (Glutamate--ammonia ligase)
Accession No.	Swiss-Prot:P15104NCBI Gene ID:2752
Uniprot	P15104
GeneID	2752;
Calculated MW	42 kDa
Concentration	1 mg/ml
Formulation	Liquid in PBS containing 50% glycerol, 0.5% BSA and 0.02% sodium azide.
Storage	Store at -20°C

## Application Details

Western blotting: 1B&amp;B1500-1B&amp;B12000

## Images



Western Blot analysis of 1,mouse-liver 2,hela 3,mouse-brain cells using primary antibody diluted at 1:1000(°C overnight). Secondary antibodyB&B1Goat Anti-rabbit IgG IRDye 800( diluted at 1:5000, 25B'£C, 1 hour)

---

Note: This product is for in vitro research use only