

FIG4 Polyclonal Antibody

Catalog No: #46895

Package Size: #46895-1 50ul #46895-2 100ul

Orders: order@signalwayantibody.comSupport: tech@signalwayantibody.com

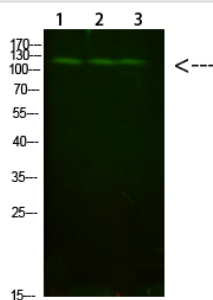
Description

Product Name	FIG4 Polyclonal Antibody
Host Species	Rabbit
Clonality	Polyclonal
Purification	The antibody was affinity-purified from rabbit antiserum by affinity-chromatography using epitope-specific immunogen.
Applications	WB
Species Reactivity	Hu Ms
Specificity	This antibody detects endogenous levels of FIG4
Immunogen Type	protein
Immunogen Description	Synthesized peptide derived from human FIG4. at AA range: 341-390
Target Name	FIG4
Other Names	Polyphosphoinositide phosphatase (EC 3.1.3.-) (Phosphatidylinositol 3,5-bisphosphate 5-phosphatase) (SAC domain-containing protein 3)
Accession No.	Swiss-Prot:Q92562NCBI Gene ID:9896
Uniprot	Q92562
GeneID	9896;
Calculated MW	104 kDa
Concentration	1 mg/ml
Formulation	Liquid in PBS containing 50% glycerol, 0.5% BSA and 0.02% sodium azide.
Storage	Store at -20°C

Application Details

Western blotting: 1B&B1500-1B&B12000

Images



Western Blot analysis of 1,mouse-liver 2,hela 3,mouse-brain cells using primary antibody diluted at 1:1000(°C overnight). Secondary antibodyB&B1Goat Anti-rabbit IgG IRDye 800(diluted at 1:5000, 25B°F&C, 1 hour)

Note: This product is for in vitro research use only