

GRIN1 Polyclonal Antibody

Catalog No: #46897

Package Size: #46897-1 50ul #46897-2 100ul

Orders: order@signalwayantibody.com

Support: tech@signalwayantibody.com

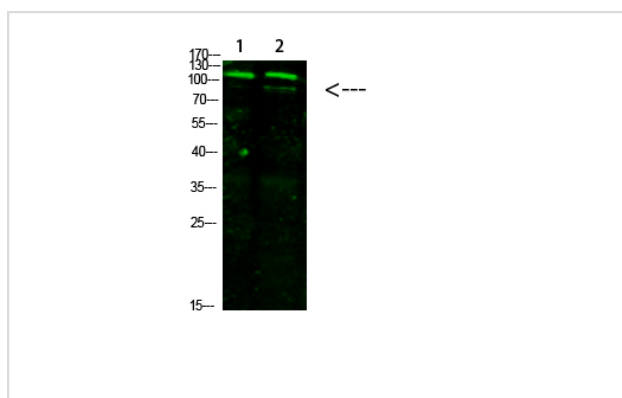
Description

Product Name	GRIN1 Polyclonal Antibody
Host Species	Rabbit
Clonality	Polyclonal
Purification	The antibody was affinity-purified from rabbit antiserum by affinity-chromatography using epitope-specific immunogen.
Applications	WB
Species Reactivity	Hu Ms Rt
Specificity	This antibody detects endogenous levels of GRIN1
Immunogen Type	protein
Immunogen Description	Synthesized peptide derived from human GRIN1. at AA range: 840-880
Target Name	GRIN1
Other Names	Glutamate [NMDA] receptor subunit zeta-1 (N-methyl-D-aspartate receptor subunit NR1) (NMD-R1)
Accession No.	Swiss-Prot:Q05586NCBI Gene ID:2902
Uniprot	Q05586
GeneID	2902;
Calculated MW	110 kDa
Concentration	1 mg/ml
Formulation	Liquid in PBS containing 50% glycerol, 0.5% BSA and 0.02% sodium azide.
Storage	Store at -20°C

Application Details

Western blotting: 1B£B'1500-1B£B'12000

Images



Western Blot analysis of 1,mouse-liver 2,hela cells using primary antibody diluted at 1:1000(°C overnight). Secondary antibodyB£B'1Goat Anti-rabbit IgG IRDye 800(diluted at 1:5000, 25B'£C, 1 hour)

Note: This product is for in vitro research use only