

V-ATPase S1 Polyclonal Antibody

Catalog No: #46900

Package Size: #46900-1 50ul #46900-2 100ul

Orders: order@signalwayantibody.com

Support: tech@signalwayantibody.com

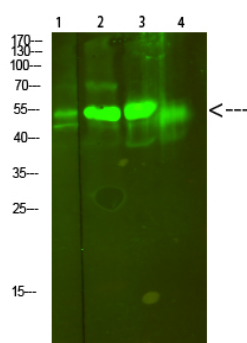
Description

Product Name	V-ATPase S1 Polyclonal Antibody
Host Species	Rabbit
Clonality	Polyclonal
Purification	The antibody was affinity-purified from rabbit antiserum by affinity-chromatography using epitope-specific immunogen.
Applications	WB
Species Reactivity	Hu Ms Rt
Specificity	V-ATPase S1 Polyclonal Antibody detects endogenous levels of V-ATPase S1
Immunogen Type	protein
Immunogen Description	Synthesized peptide derived from human V-ATPase S1. at AA range: 421-470
Target Name	V-ATPase S1
Other Names	V-type proton ATPase subunit S1 (V-ATPase subunit S1) (Protein XAP-3) (V-ATPase Ac45 subunit) (V-ATPase S1 accessory protein) (Vacuolar proton pump subunit S1)
Accession No.	Swiss-Prot:Q15904NCBI Gene ID:537
Uniprot	Q15904
GeneID	537;
Calculated MW	51 kDa
Concentration	1 mg/ml
Formulation	Liquid in PBS containing 50% glycerol, 0.5% BSA and 0.02% sodium azide.
Storage	Store at -20°C

Application Details

Western blotting: 1B&B1500-1B&B12000

Images



Western Blot analysis of 1,mouse-lung 2,mouse-brain 3,mouse-spleen 4,mouse-kidney cells using primary antibody diluted at 1:500(°C overnight). Secondary antibodyB&B1Goat Anti-rabbit IgG IRDye 800(diluted at 1:5000, 25B'Γ£C, 1 hour)

Note: This product is for in vitro research use only