

MMP-10 Polyclonal Antibody

Catalog No: #46904

Package Size: #46904-1 50ul #46904-2 100ul

Orders: order@signalwayantibody.com

Support: tech@signalwayantibody.com

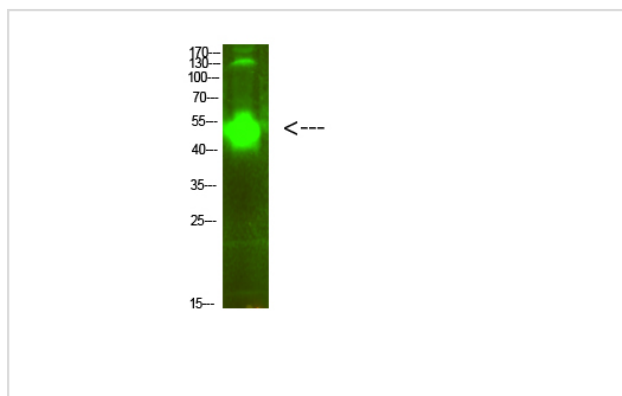
Description

Product Name	MMP-10 Polyclonal Antibody
Host Species	Rabbit
Clonality	Polyclonal
Purification	The antibody was affinity-purified from rabbit antiserum by affinity-chromatography using epitope-specific immunogen.
Applications	WB
Species Reactivity	Hu
Specificity	MMP-10 Polyclonal Antibody detects endogenous levels of MMP-10
Immunogen Type	protein
Immunogen Description	Synthesized peptide derived from human MMP-10. at AA range: 351-400
Target Name	MMP-10
Other Names	Stromelysin-2 (SL-2) (EC 3.4.24.22) (Matrix metalloproteinase-10) (MMP-10) (Transin-2)
Accession No.	Swiss-Prot:P09238NCBI Gene ID:4319
Uniprot	P09238
GeneID	4319;
Calculated MW	52 kDa
Concentration	1 mg/ml
Formulation	Liquid in PBS containing 50% glycerol, 0.5% BSA and 0.02% sodium azide.
Storage	Store at -20°C

Application Details

Western blotting: 1B£B'1500-1B£B'12000

Images



Western Blot analysis of Hela cells using primary antibody diluted at 1:500(°C overnight). Secondary antibodyB£B'Goat Anti-rabbit IgG IRDye 800(diluted at 1:5000, 25B'£C, 1 hour)

Note: This product is for in vitro research use only