

## GCM2 Polyclonal Antibody

Catalog No: #46909

Package Size: #46909-1 50ul #46909-2 100ul

Orders: order@signalwayantibody.com

Support: tech@signalwayantibody.com

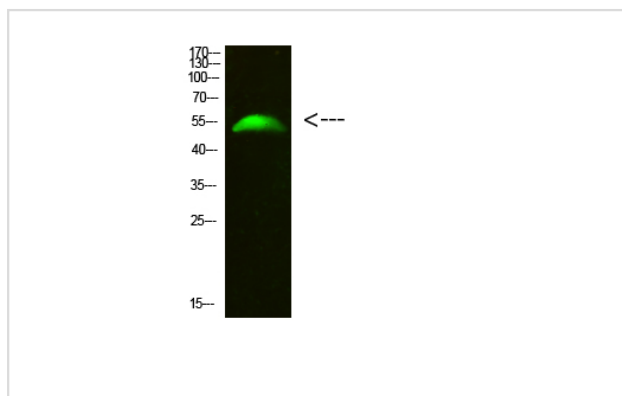
## Description

Product Name	GCM2 Polyclonal Antibody
Host Species	Rabbit
Clonality	Polyclonal
Purification	The antibody was affinity-purified from rabbit antiserum by affinity-chromatography using epitope-specific immunogen.
Applications	WB
Species Reactivity	Hu Ms Rt
Specificity	GCM2 Polyclonal Antibody detects endogenous levels of GCM2
Immunogen Type	protein
Immunogen Description	Synthesized peptide derived from human GCM2. at AA range: 21-70
Target Name	GCM2
Other Names	Chorion-specific transcription factor GCMb (hGCMb) (GCM motif protein 2) (Glial cells missing homolog 2)
Accession No.	Swiss-Prot:O75603NCBI Gene ID:9247
Uniprot	O75603
GeneID	9247;
Calculated MW	56 kDa
Concentration	1 mg/ml
Formulation	Liquid in PBS containing 50% glycerol, 0.5% BSA and 0.02% sodium azide.
Storage	Store at -20°C

## Application Details

Western blotting: 1B£B1500-1B£B12000

## Images



Western Blot analysis of 293T cells using primary antibody diluted at 1:500(°C overnight). Secondary antibodyB£B1Goat Anti-rabbit IgG IRDye 800( diluted at 1:5000, 25B'Γ£C, 1 hour)

---

Note: This product is for in vitro research use only