

GCK/GLK Polyclonal Antibody

Catalog No: #46910

Package Size: #46910-1 50ul #46910-2 100ul

Orders: order@signalwayantibody.com

Support: tech@signalwayantibody.com

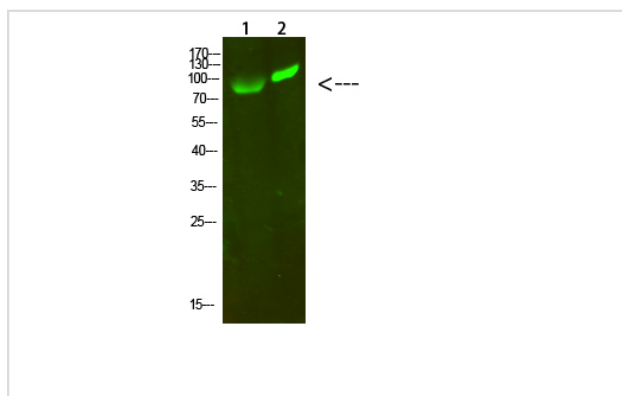
Description

Product Name	GCK/GLK Polyclonal Antibody
Host Species	Rabbit
Clonality	Polyclonal
Purification	The antibody was affinity-purified from rabbit antiserum by affinity-chromatography using epitope-specific immunogen.
Applications	WB
Species Reactivity	Hu Rt
Specificity	GCK/GLK Polyclonal Antibody detects endogenous levels of GCK/GLK
Immunogen Type	protein
Immunogen Description	Synthesized peptide derived from human GCK/GLK. at AA range: 221-270
Target Name	GCK/GLK
Other Names	Mitogen-activated protein kinase kinase kinase 2 (EC 2.7.11.1) (B lymphocyte serine/threonine-protein kinase) (Germinal center kinase) (GC kinase) (MAPK/ERK kinase kinase 2) (MEK kinase kinase 2) (MEKKK 2) (Rab8-interacting protein) Mitogen-activated protein kinase kinase kinase
Accession No.	Swiss-Prot:Q12851/Q81VH8NCBI Gene ID:5871/8491
Uniprot	Q12851
GeneID	5871;
Calculated MW	100 kDa
Concentration	1 mg/ml
Formulation	Liquid in PBS containing 50% glycerol, 0.5% BSA and 0.02% sodium azide.
Storage	Store at -20°C

Application Details

Western blotting: 1B£B1500-1B£B12000

Images



Western Blot analysis of 1,293T 2, hela cells using primary antibody diluted at 1:1000 (°C overnight). Secondary antibody B£B1Goat Anti-rabbit IgG IRDye 800 (diluted at 1:5000, 25B'Γ£C, 1 hour)

Note: This product is for in vitro research use only