

## OASL Polyclonal Antibody

Catalog No: #46919

Package Size: #46919-1 50ul #46919-2 100ul

Orders: order@signalwayantibody.com

Support: tech@signalwayantibody.com

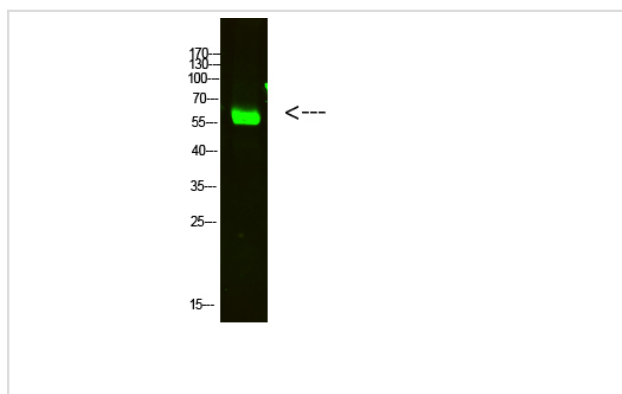
## Description

Product Name	OASL Polyclonal Antibody
Host Species	Rabbit
Clonality	Polyclonal
Purification	The antibody was affinity-purified from rabbit antiserum by affinity-chromatography using epitope-specific immunogen.
Applications	WB
Species Reactivity	Hu
Specificity	OASL Polyclonal Antibody detects endogenous levels of OASL
Immunogen Type	protein
Immunogen Description	Synthesized peptide derived from human OASL. at AA range: 1-50
Target Name	OASL
Other Names	2'-5'-oligoadenylate synthase-like protein (2'-5'-OAS-related protein) (2'-5'-OAS-RP) (59 kDa) 2'-5'-oligoadenylate synthase-like protein) (Thyroid receptor-interacting protein 14) (TR-interacting protein 14) (TRIP-14) (p59 OASL) (p59OASL)
Accession No.	Swiss-Prot:Q15646NCBI Gene ID:8638
Uniprot	Q15646
GeneID	8638;
Calculated MW	60 kDa
Concentration	1 mg/ml
Formulation	Liquid in PBS containing 50% glycerol, 0.5% BSA and 0.02% sodium azide.
Storage	Store at -20°C

## Application Details

Western blotting: 1B£B1500-1B£B12000

## Images



Western Blot analysis of HELA cells using primary antibody diluted at 1:2000(°C overnight). Secondary antibodyB£B1Goat Anti-rabbit IgG IRDye 800( diluted at 1:5000, 25B'Γ£C, 1 hour)

---

Note: This product is for in vitro research use only