

## ABCC6 Antibody

Catalog No: #46301

Orders: [order@signalwayantibody.com](mailto:order@signalwayantibody.com)Support: [tech@signalwayantibody.com](mailto:tech@signalwayantibody.com)

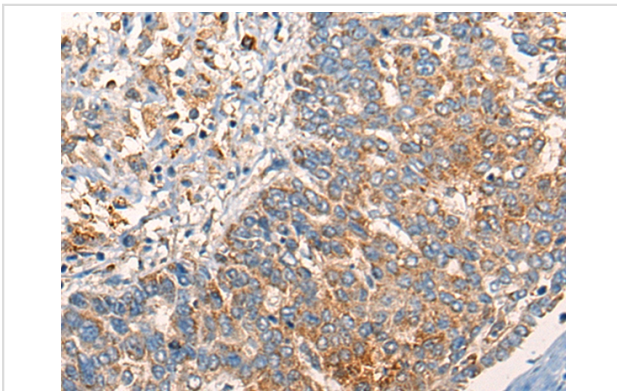
## Description

Product Name	ABCC6 Antibody
Host Species	Rabbit
Clonality	Polyclonal
Purification	Antigen affinity purification
Applications	IHC
Species Reactivity	Hu
Specificity	The antibody detects endogenous levels of total ABCC6 protein.
Immunogen Type	peptide
Immunogen Description	Synthetic peptide corresponding to internal residues of human ABCC6
Target Name	ABCC6
Other Names	ARA; PXE; MLP1; MRP6; PXE1; URG7; ABC34; GAC12; MOATE; MOAT-E; EST349056
Accession No.	Swiss-Prot:O95255 NCBI Gene ID:368NCBI Protein:NP_001072996
Uniprot	O95255
GeneID	368;
Concentration	0.9mg/ml
Formulation	Rabbit IgG in pH7.4 PBS, 0.05% NaN <sub>3</sub> , 40% Glycerol.
Storage	Store at -20°C

## Application Details

Immunohistochemistry: 1: 20-100

## Images



The image on the left is immunohistochemistry of paraffin-embedded Human liver cancer tissue using 46301(ABCC6 Antibody) at dilution 1/25, on the right is treated with synthetic peptide. (Original magnification: x200)

## Background

The protein encoded by this gene is a member of the superfamily of ATP-binding cassette (ABC) transporters. ABC proteins transport various molecules across extra- and intra-cellular membranes. ABC genes are divided into seven distinct subfamilies (ABC1, MDR/TAP, MRP, ALD, OABP, GCN20, White). The encoded protein, a member of the MRP subfamily, is involved in multi-drug resistance. Mutations in this gene cause pseudoxanthoma elasticum. Alternatively spliced transcript variants that encode different proteins have been described for this gene.

---

Note: This product is for in vitro research use only