

ADAP2 Antibody

Catalog No: #46305

Orders: order@signalwayantibody.comSupport: tech@signalwayantibody.com

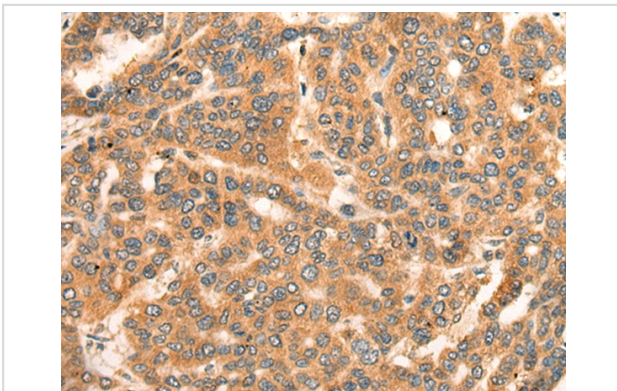
Description

Product Name	ADAP2 Antibody
Host Species	Rabbit
Clonality	Polyclonal
Purification	Antigen affinity purification
Applications	IHC
Species Reactivity	Hu
Specificity	The antibody detects endogenous levels of total ADAP2 protein.
Immunogen Type	peptide
Immunogen Description	Synthetic protein corresponding to residues near the C terminal of human ADAP2
Target Name	ADAP2
Other Names	CENTA2; cent-b; HSA272195
Accession No.	Swiss-Prot:Q9NPF8NCBI Gene ID:55803NCBI Protein:BC033758
Uniprot	Q9NPF8
GeneID	55803;
Concentration	0.2mg/ml
Formulation	Rabbit IgG in pH7.4 PBS, 0.05% NaN ₃ , 40% Glycerol.
Storage	Store at -20°C

Application Details

Immunohistochemistry: 1: 25-100

Images



The image on the left is immunohistochemistry of paraffin-embedded Human liver cancer tissue using 46305(ADAP2 Antibody) at dilution 1/20, on the right is treated with fusion protein. (Original magnification: x200)

Background

GTPase-activating protein for the ADP ribosylation factor family (Potential). Binds phosphatidylinositol 3,4,5-trisphosphate (PtdInsP3) and inositol 1,3,4,5-tetrakisphosphate (InsP4). Possesses a stoichiometry of two binding sites for InsP4 with identical affinity.

Note: This product is for in vitro research use only