

## ADRA2A Antibody

Catalog No: #46306

Orders: order@signalwayantibody.com

Support: tech@signalwayantibody.com

## Description

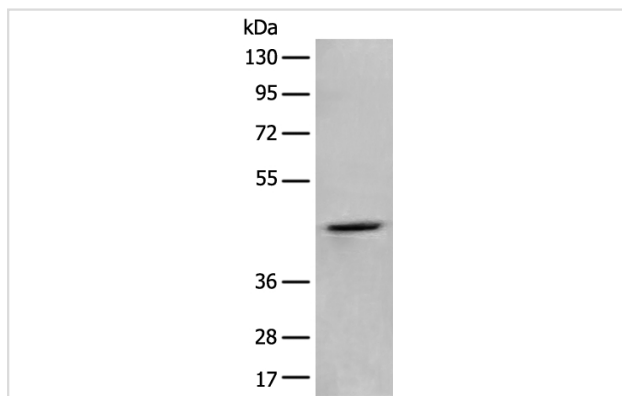
Product Name	ADRA2A Antibody
Host Species	Rabbit
Clonality	Polyclonal
Purification	Antigen affinity purification
Applications	WB IHC
Species Reactivity	Hu
Specificity	The antibody detects endogenous levels of total ADRA2A protein.
Immunogen Type	peptide
Immunogen Description	Synthetic peptide corresponding to residues near the N terminal of human ADRA2A
Target Name	ADRA2A
Other Names	ADRA2; ADRAR; ZNF32; ADRA2R; ALPHA2AAR
Accession No.	Swiss-Prot:P08913 NCBI Gene ID:150NCBI Protein:NP_000672
Uniprot	P08913
GeneID	150;
Calculated MW	49 kDa
Concentration	1.1mg/ml
Formulation	Rabbit IgG in pH7.4 PBS, 0.05% NaN <sub>3</sub> , 40% Glycerol.
Storage	Store at -20°C

## Application Details

Western blotting: 1:200-1:1000

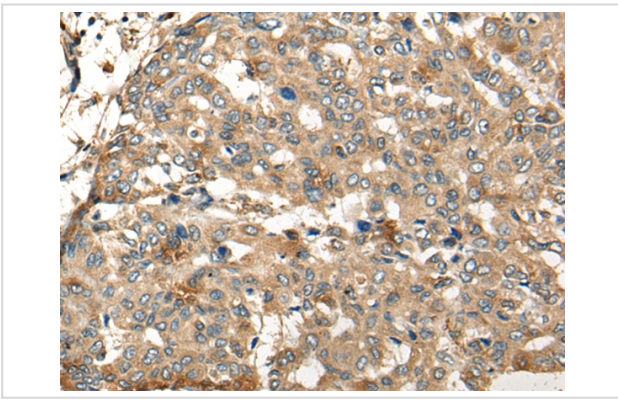
Immunohistochemistry: 1: 25-100

## Images



Gel: 8%SDS-PAGE

lysate: 40 µg, Lane: Human left thymus tissue lysate,  
Primary antibody: 46306B (ADRA2A Antibody) at dilution  
1/500Secondary antibody: Goat anti rabbit IgG at 1/8000 dilution,  
Exposure time: 5 minutes



The image on the left is immunohistochemistry of paraffin-embedded Human liver cancer tissue using 46306(ADRA2A Antibody) at dilution 1/30, on the right is treated with synthetic peptide. (Original magnification: x200)

## Background

Alpha-2-adrenergic receptors are members of the G protein-coupled receptor superfamily. They include 3 highly homologous subtypes: alpha2A, alpha2B, and alpha2C. These receptors have a critical role in regulating neurotransmitter release from sympathetic nerves and from adrenergic neurons in the central nervous system. Studies in mouse revealed that both the alpha2A and alpha2C subtypes were required for normal presynaptic control of transmitter release from sympathetic nerves in the heart and from central noradrenergic neurons; the alpha2A subtype inhibited transmitter release at high stimulation frequencies, whereas the alpha2C subtype modulated neurotransmission at lower levels of nerve activity. This gene encodes alpha2A subtype and it contains no introns in either its coding or untranslated sequences.?

Note: This product is for in vitro research use only