

APOBEC1 Antibody

Catalog No: #46309

Orders: order@signalwayantibody.comSupport: tech@signalwayantibody.com

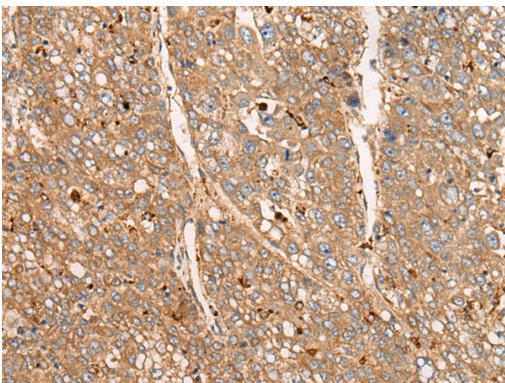
Description

Product Name	APOBEC1 Antibody
Host Species	Rabbit
Clonality	Polyclonal
Purification	Antigen affinity purification
Applications	IHC
Species Reactivity	Hu
Specificity	The antibody detects endogenous levels of total APOBEC1 protein.
Immunogen Type	peptide
Immunogen Description	Synthetic peptide corresponding to residues near the N terminal of human APOBEC1
Target Name	APOBEC1
Other Names	BEDP; HEPR; CDAR1; APOBEC-1
Accession No.	Swiss-Prot:P41238NCBI Gene ID:339NCBI Protein:NP_001635
Uniprot	P41238
GeneID	339;
Concentration	0.6mg/ml
Formulation	Rabbit IgG in pH7.4 PBS, 0.05% NaN ₃ , 40% Glycerol.
Storage	Store at -20°C

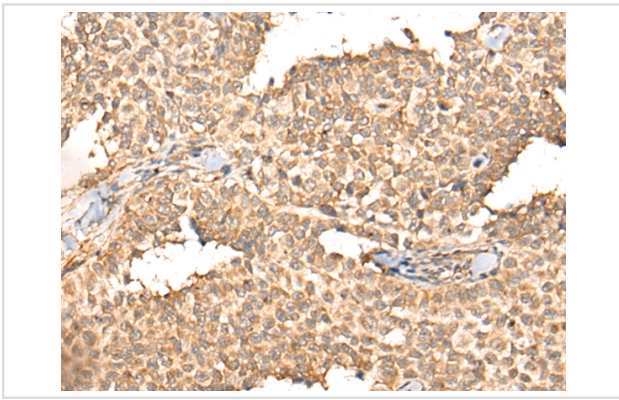
Application Details

Immunohistochemistry: 1: 25-100

Images



The image on the left is immunohistochemistry of paraffin-embedded Human liver cancer tissue using 46309(APOBEC1 Antibody) at dilution 1/25, on the right is treated with synthetic peptide. (Original magnification: x200)



The image on the left is immunohistochemistry of paraffin-embedded Human ovarian cancer tissue using 46309(APOBEC1 Antibody) at dilution 1/25, on the right is treated with synthetic peptide. (Original magnification: x200)

Background

This gene encodes a member of the cytidine deaminase enzyme family. The encoded protein forms a multiple-protein editing holoenzyme with APOBEC1 complementation factor (ACF) and APOBEC1 stimulating protein (ASP). This holoenzyme is involved in the editing of C-to-U nucleotide bases in apolipoprotein B and neurofibromatosis-1 mRNAs. Multiple transcript variants encoding different isoforms have been found for this gene.

Note: This product is for in vitro research use only