

## APOBR Antibody

Catalog No: #46310

Orders: [order@signalwayantibody.com](mailto:order@signalwayantibody.com)Support: [tech@signalwayantibody.com](mailto:tech@signalwayantibody.com)

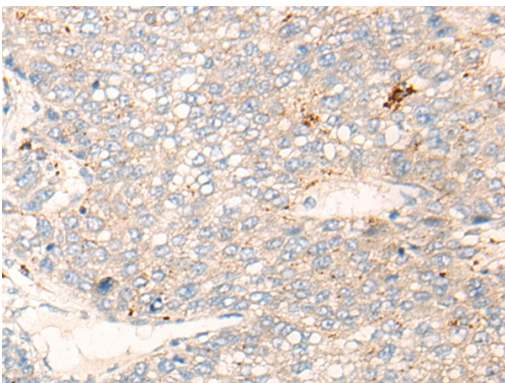
## Description

Product Name	APOBR Antibody
Host Species	Rabbit
Clonality	Polyclonal
Purification	Antigen affinity purification
Applications	IHC
Species Reactivity	Hu
Specificity	The antibody detects endogenous levels of total APOBR protein.
Immunogen Type	peptide
Immunogen Description	Synthetic peptide corresponding to internal residues of human APOBR
Target Name	APOBR
Other Names	APOB48R; APOB100R
Accession No.	Swiss-Prot:Q0VD83NCBI Gene ID:55911NCBI Protein:NP_061160
Uniprot	Q0VD83
GeneID	55911;
Concentration	0.6mg/ml
Formulation	Rabbit IgG in pH7.4 PBS, 0.05% NaN <sub>3</sub> , 40% Glycerol.
Storage	Store at -20°C

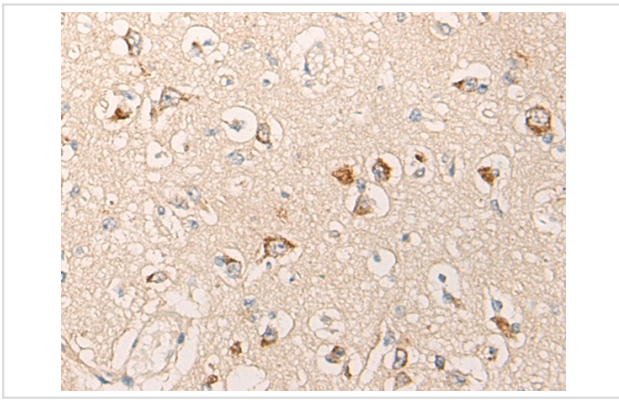
## Application Details

Immunohistochemistry: 1: 10-50

## Images



The image on the left is immunohistochemistry of paraffin-embedded Human liver cancer tissue using 46310(APOBR Antibody) at dilution 1/25, on the right is treated with synthetic peptide. (Original magnification: x200)



The image on the left is immunohistochemistry of paraffin-embedded Human brain tissue using 46310(APOBR Antibody) at dilution 1/25, on the right is treated with synthetic peptide. (Original magnification: x200)

## Background

Apolipoprotein B48 receptor is a macrophage receptor that binds to the apolipoprotein B48 of dietary triglyceride (TG)-rich lipoproteins. This receptor may provide essential lipids, lipid-soluble vitamins and other nutrients to reticuloendothelial cells. If overwhelmed with elevated plasma triglyceride, the apolipoprotein B48 receptor may contribute to foam cell formation, endothelial dysfunction, and atherothrombogenesis.?

Note: This product is for in vitro research use only