

## ARID1B Antibody

Catalog No: #46312

Orders: order@signalwayantibody.com

Support: tech@signalwayantibody.com

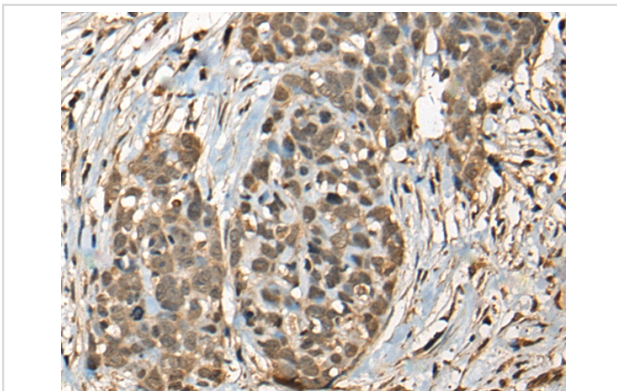
## Description

Product Name	ARID1B Antibody
Host Species	Rabbit
Clonality	Polyclonal
Purification	Antigen affinity purification
Applications	IHC
Species Reactivity	Hu
Specificity	The antibody detects endogenous levels of total ARID1B protein.
Immunogen Type	peptide
Immunogen Description	Synthetic peptide corresponding to residues near the C terminal of human ARID1B
Target Name	ARID1B
Other Names	CSS1; OSA2; 6A3-5; DAN15; MRD12; P250R; BRIGHT; BAF250B; ELD/OSA1
Accession No.	Swiss-Prot:Q8NFD5 NCBI Gene ID:57492NCBI Protein:NP_059989
Uniprot	Q8NFD5
GeneID	57492;
Concentration	1mg/ml
Formulation	Rabbit IgG in pH7.4 PBS, 0.05% NaN <sub>3</sub> , 40% Glycerol.
Storage	Store at -20°C

## Application Details

Immunohistochemistry: 1: 25-100

## Images



The image on the left is immunohistochemistry of paraffin-embedded Human thyroid cancer tissue using 46312(ARID1B Antibody) at dilution 1/25, on the right is treated with synthetic peptide. (Original magnification: x200)

## Background

This locus encodes an AT-rich DNA interacting domain-containing protein. The encoded protein is a component of the SWI/SNF chromatin remodeling complex and may play a role in cell-cycle activation. The protein encoded by this locus is similar to AT-rich interactive domain-containing protein 1A. These two proteins function as alternative, mutually exclusive ARID-subunits of the SWI/SNF complex. The associated complexes play opposing roles. Alternatively spliced transcript variants encoding different isoforms have been described.?

---

Note: This product is for in vitro research use only