

## ASIC1 Antibody

Catalog No: #46313

Orders: order@signalwayantibody.com

Support: tech@signalwayantibody.com

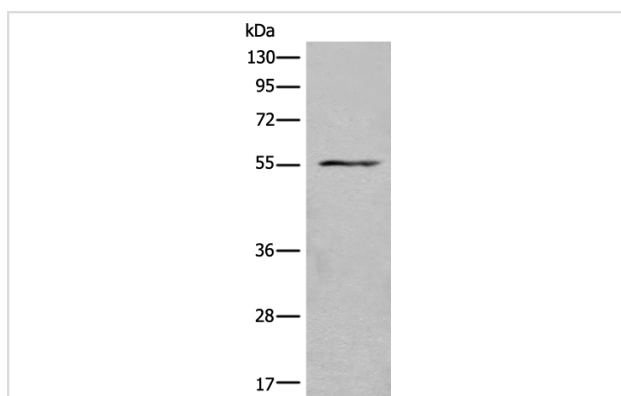
## Description

Product Name	ASIC1 Antibody
Host Species	Rabbit
Clonality	Polyclonal
Purification	Antigen affinity purification
Applications	WB
Species Reactivity	Hu Ms
Specificity	The antibody detects endogenous levels of total ASIC1 protein.
Immunogen Type	peptide
Immunogen Description	Synthetic peptide corresponding to internal residues of human ASIC1
Target Name	ASIC1
Other Names	ASIC; ACCN2; BNaC2
Accession No.	Swiss-Prot:P78348NCBI Gene ID:41NCBI Protein:NP_001086
Uniprot	P78348
GeneID	41;
Calculated MW	60 kDa
Concentration	1mg/ml
Formulation	Rabbit IgG in pH7.4 PBS, 0.05% NaN <sub>3</sub> , 40% Glycerol.
Storage	Store at -20°C

## Application Details

Western blotting: 1:200-1:1000

## Images



Gel: 8%SDS-PAGE

lysate: 40 µg, Lane: Mouse heart tissue lysate,

Primary antibody: 46313B (ASIC1 Antibody) at dilution 1/200

Secondary antibody: Goat anti rabbit IgG at 1/8000 dilution,

Exposure time: 40 seconds

## Background

This gene encodes a member of the acid-sensing ion channel (ASIC) family of proteins, which are part of the degenerin/epithelial sodium channel (DEG/ENaC) superfamily. Members of the ASIC family are sensitive to amiloride and function in neurotransmission. The encoded proteins function in

learning, pain transduction, touch sensation, and development of memory and fear. Alternatively spliced transcript variants have been described.

---

Note: This product is for in vitro research use only