

ASXL1 Antibody

Catalog No: #46315

Orders: order@signalwayantibody.com

Support: tech@signalwayantibody.com

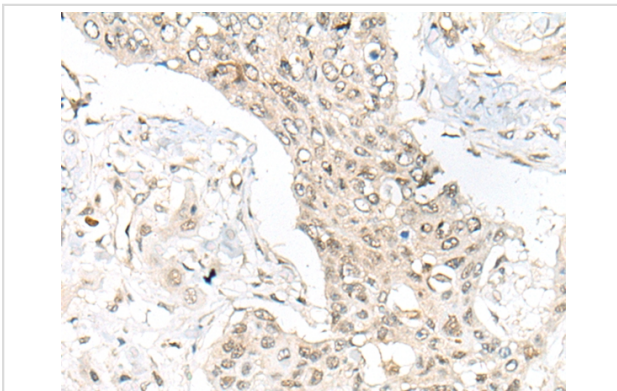
Description

Product Name	ASXL1 Antibody
Host Species	Rabbit
Clonality	Polyclonal
Purification	Antigen affinity purification
Applications	IHC
Species Reactivity	Hu Ms
Specificity	The antibody detects endogenous levels of total ASXL1 protein.
Immunogen Type	peptide
Immunogen Description	Synthetic peptide corresponding to internal residues of human ASXL1
Target Name	ASXL1
Other Names	MDS; BOPS
Accession No.	Swiss-Prot:Q8IXJ9 NCBI Gene ID:171023NCBI Protein:NP_056153
Uniprot	Q8IXJ9
GeneID	171023;
Concentration	1.1mg/ml
Formulation	Rabbit IgG in pH7.4 PBS, 0.05% NaN ₃ , 40% Glycerol.
Storage	Store at -20°C

Application Details

Immunohistochemistry: 1: 20-100

Images



The image on the left is immunohistochemistry of paraffin-embedded Human esophagus cancer tissue using 46315(ASXL1 Antibody) at dilution 1/45, on the right is treated with synthetic peptide. (Original magnification: x200)

Background

This gene is similar to the Drosophila additional sex combs gene, which encodes a chromatin-binding protein required for normal determination of segment identity in the developing embryo. The protein is a member of the Polycomb group of proteins, which are necessary for the maintenance of stable repression of homeotic and other loci. The protein is thought to disrupt chromatin in localized areas, enhancing transcription of certain genes while repressing the transcription of other genes. The protein encoded by this gene functions as a ligand-dependent co-activator for retinoic acid

receptor in cooperation with nuclear receptor coactivator 1. Mutations in this gene are associated with myelodysplastic syndromes and chronic myelomonocytic leukemia. Alternative splicing results in multiple transcript variants.

Note: This product is for in vitro research use only