

ASXL2 Antibody

Catalog No: #46316

Orders: order@signalwayantibody.comSupport: tech@signalwayantibody.com

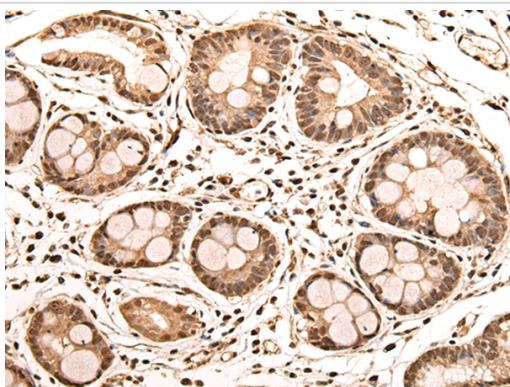
Description

Product Name	ASXL2 Antibody
Host Species	Rabbit
Clonality	Polyclonal
Purification	Antigen affinity purification
Applications	IHC
Species Reactivity	Hu
Specificity	The antibody detects endogenous levels of total ASXL2 protein.
Immunogen Type	peptide
Immunogen Description	Synthetic protein corresponding to residues near the C terminal of human ASXL2
Target Name	ASXL2
Other Names	ASXH2
Accession No.	Swiss-Prot:Q76L83NCBI Gene ID:55252NCBI Protein:BC042999
Uniprot	Q76L83
GeneID	55252;
Concentration	0.8mg/ml
Formulation	Rabbit IgG in pH7.4 PBS, 0.05% NaN ₃ , 40% Glycerol.
Storage	Store at -20°C

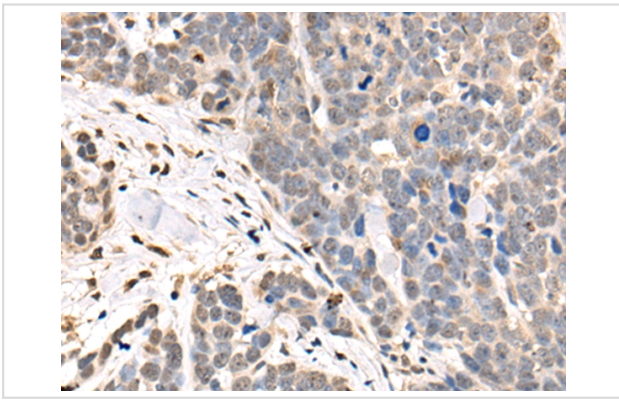
Application Details

Immunohistochemistry: 1: 25-100

Images



The image on the left is immunohistochemistry of paraffin-embedded Human gastric cancer tissue using 46316(ASXL2 Antibody) at dilution 1/30, on the right is treated with fusion protein. (Original magnification: x200)



The image on the left is immunohistochemistry of paraffin-embedded Human thyroid cancer tissue using 46316(ASXL2 Antibody) at dilution 1/30, on the right is treated with fusion protein. (Original magnification: x200)

Background

ASXL2 is a human homolog of the *Drosophila asx* gene. *Drosophila asx* is an enhancer of *trithorax* (see MIM 159555) and *polycomb* (see MIM 610231) (*ETP*) gene that encodes a chromatin protein with dual functions in transcriptional activation and silencing (Katoh and Katoh, 2003 [PubMed 12888926]).

Note: This product is for in vitro research use only