

## ATE1 Antibody

Catalog No: #46317

Orders: [order@signalwayantibody.com](mailto:order@signalwayantibody.com)Support: [tech@signalwayantibody.com](mailto:tech@signalwayantibody.com)

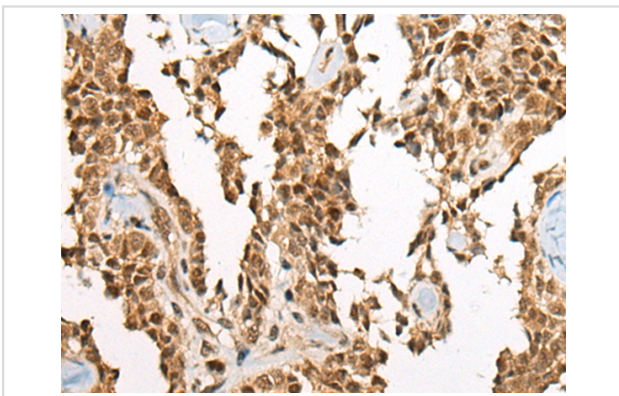
## Description

Product Name	ATE1 Antibody
Host Species	Rabbit
Clonality	Polyclonal
Purification	Antigen affinity purification
Applications	IHC
Species Reactivity	Hu
Specificity	The antibody detects endogenous levels of total ATE1 protein.
Immunogen Type	peptide
Immunogen Description	Synthetic peptide corresponding to internal residues of human ATE1
Target Name	ATE1
Accession No.	Swiss-Prot:O95260 NCBI Gene ID:11101NCBI Protein:NP_001001976
Uniprot	O95260
GeneID	11101;
Concentration	1.5mg/ml
Formulation	Rabbit IgG in pH7.4 PBS, 0.05% NaN <sub>3</sub> , 40% Glycerol.
Storage	Store at -20°C

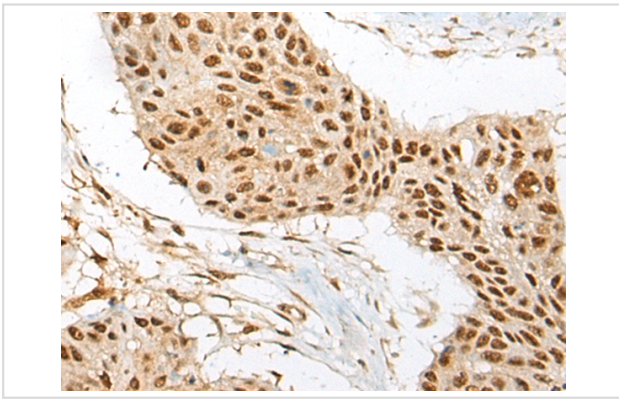
## Application Details

Immunohistochemistry: 1: 40-200

## Images



The image on the left is immunohistochemistry of paraffin-embedded Human ovarian cancer tissue using 46317(ATE1 Antibody) at dilution 1/60, on the right is treated with synthetic peptide. (Original magnification: x200)



The image on the left is immunohistochemistry of paraffin-embedded Human esophagus cancer tissue using 46317(ATE1 Antibody) at dilution 1/60, on the right is treated with synthetic peptide. (Original magnification: x200)

## Background

This gene encodes an arginyltransferase, an enzyme that is involved in posttranslational conjugation of arginine to N-terminal aspartate or glutamate residues. Conjugation of arginine to the N-terminal aspartate or glutamate targets proteins for ubiquitin-dependent degradation. Alternative splicing results in multiple transcript variants.

Note: This product is for in vitro research use only