

ATF7 Antibody

Catalog No: #46318

Orders: order@signalwayantibody.comSupport: tech@signalwayantibody.com

Description

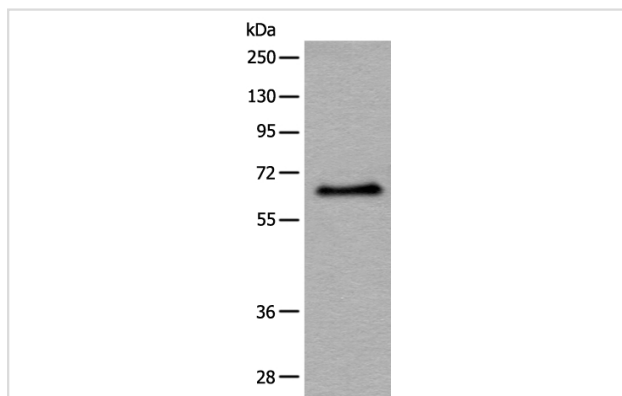
| | |
|-----------------------|---|
| Product Name | ATF7 Antibody |
| Host Species | Rabbit |
| Clonality | Polyclonal |
| Purification | Antigen affinity purification |
| Applications | WB IHC |
| Species Reactivity | Hu |
| Specificity | The antibody detects endogenous levels of total ATF7 protein. |
| Immunogen Type | peptide |
| Immunogen Description | Synthetic protein corresponding to residues near the N terminal of human ATF7 |
| Target Name | ATF7 |
| Other Names | ATFA |
| Accession No. | Swiss-Prot:P17544NCBI Gene ID:11016NCBI Protein:BC042363 |
| Uniprot | P17544 |
| GeneID | 11016; |
| Calculated MW | 53 kDa |
| Concentration | 0.9mg/ml |
| Formulation | Rabbit IgG in pH7.4 PBS, 0.05% NaN ₃ , 40% Glycerol. |
| Storage | Store at -20°C |

Application Details

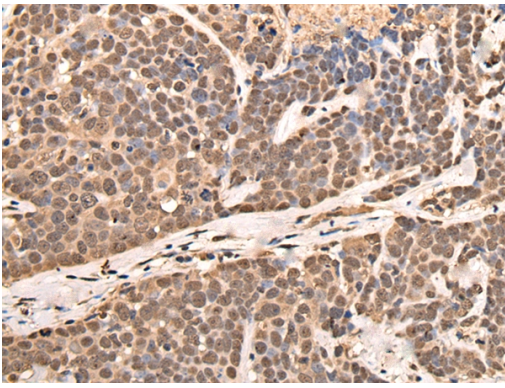
Western blotting: 1:500-1:2000

Immunohistochemistry: 1: 30-150

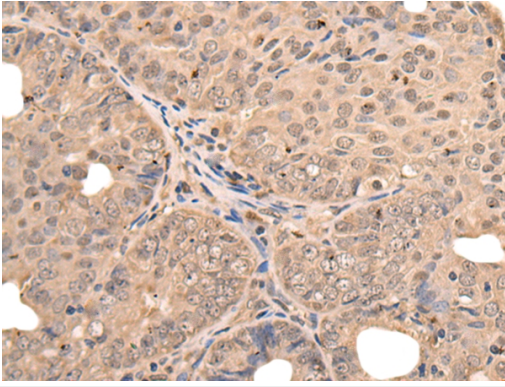
Images



Gel: 8%SDS-PAGE
lysate: 40 µg, Lane: HeLa cell lysate,
Primary antibody: 46318B (ATF7 Antibody) at dilution 1/500
Secondary antibody: Goat anti rabbit IgG at 1/8000 dilution,
Exposure time: 30seconds



The image on the left is immunohistochemistry of paraffin-embedded Human thyroid cancer tissue using 46318(ATF7 Antibody) at dilution 1/40, on the right is treated with fusion protein. (Original magnification: x200)



The image on the left is immunohistochemistry of paraffin-embedded Human ovarian cancer tissue using 46318(ATF7 Antibody) at dilution 1/40, on the right is treated with fusion protein. (Original magnification: x200)

Background

Plays important functions in early cell signaling. Binds the cAMP response element (CRE) (consensus: 5'-GTGACGT[AG][AG]-3'), a sequence present in many viral and cellular promoters. Activator of the NF-ELAM1/delta-A site of the E-selectin promoter. Has no intrinsic transcriptional activity, but activates transcription on formation of JUN or FOS heterodimers. Also can bind TRE promoter sequences when heterodimerized with members of the JUN family.

Note: This product is for in vitro research use only