

HSDL2 antibody

Catalog No: #31905

Package Size: #31905-1 50ul #31905-2 100ul

Orders: order@signalwayantibody.comSupport: tech@signalwayantibody.com

Description

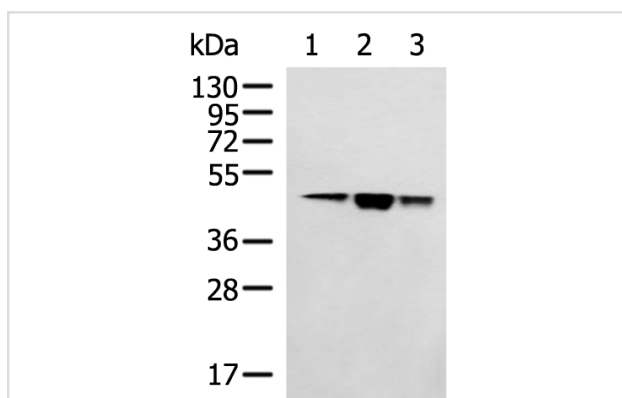
Product Name	HSDL2 antibody
Host Species	Rabbit
Clonality	Polyclonal
Purification	Antigen affinity purification
Applications	WB, IHC
Species Reactivity	Hu
Immunogen Description	Fusion protein of human HSDL2
Target Name	HSDL2
Other Names	C9orf99; SDR13C1
Accession No.	NCBI Protein#:BC004331
Uniprot	Q6YN16
GeneID	84263
Calculated MW	45 kDa
Concentration	1.4mg/ml
Formulation	pH7.4 PBS, 0.05% NaN3, 40% Glycerol
Storage	Store at -20°C/1 year

Application Details

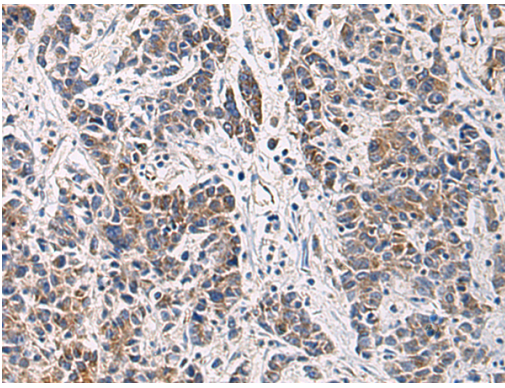
WB dilution:1:1000-1:5000

IHC dilution:1:50-1:200

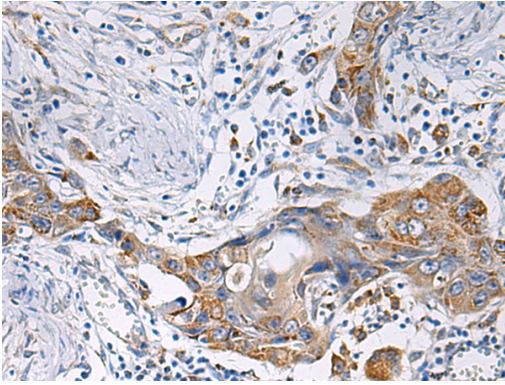
Images



Gel: 8%SDS-PAGE, Lysate: 40 µg, Lane 1-3: HeLa, 293T, HepG2 cell lysates, Primary antibody:HSDL2 Antibody at dilution 1/1000, Secondary antibody: Goat anti rabbit IgG at 1/5000 dilution, Exposure time: 15 seconds



The image is immunohistochemistry of paraffin-embedded Human colorectal cancer tissue using (HSibody) at dilution 1/80.



The image is immunohistochemistry of paraffin-embedded Human esophagus cancer tissue using (HSibody) at dilution 1/80.

Background

Has apparently no steroid dehydrogenase activity.

Note: This product is for in vitro research use only