

## BASP1 Antibody

Catalog No: #46332

Orders: [order@signalwayantibody.com](mailto:order@signalwayantibody.com)Support: [tech@signalwayantibody.com](mailto:tech@signalwayantibody.com)

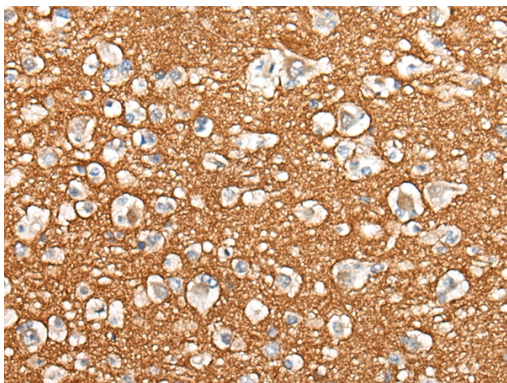
## Description

Product Name	BASP1 Antibody
Host Species	Rabbit
Clonality	Polyclonal
Purification	Antigen affinity purification
Applications	IHC
Species Reactivity	Hu
Specificity	The antibody detects endogenous levels of total BASP1 protein.
Immunogen Type	peptide
Immunogen Description	Synthetic peptide corresponding to internal residues of human BASP1
Target Name	BASP1
Other Names	CAP23; NAP22; CAP-23; NAP-22
Accession No.	Swiss-Prot:P80723 NCBI Gene ID:10409NCBI Protein:NP_006308
Uniprot	P80723
GeneID	10409;
Concentration	0.7mg/ml
Formulation	Rabbit IgG in pH7.4 PBS, 0.05% NaN <sub>3</sub> , 40% Glycerol.
Storage	Store at -20°C

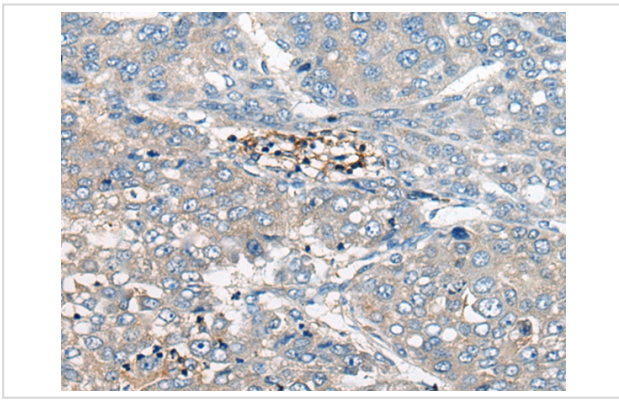
## Application Details

Immunohistochemistry: 1: 25-100

## Images



The image on the left is immunohistochemistry of paraffin-embedded Human brain tissue using 46332(BASP1 Antibody) at dilution 1/25, on the right is treated with synthetic peptide. (Original magnification: x200)



The image on the left is immunohistochemistry of paraffin-embedded Human liver cancer tissue using 46332(BASP1 Antibody) at dilution 1/25, on the right is treated with synthetic peptide. (Original magnification: x200)

## Background

This gene encodes a membrane bound protein with several transient phosphorylation sites and PEST motifs. Conservation of proteins with PEST sequences among different species supports their functional significance. PEST sequences typically occur in proteins with high turnover rates. Immunological characteristics of this protein are species specific. This protein also undergoes N-terminal myristoylation. Alternative splicing results in multiple transcript variants that encode the same protein.

Note: This product is for in vitro research use only