

## BATF Antibody

Catalog No: #46333

Orders: order@signalwayantibody.com

Support: tech@signalwayantibody.com

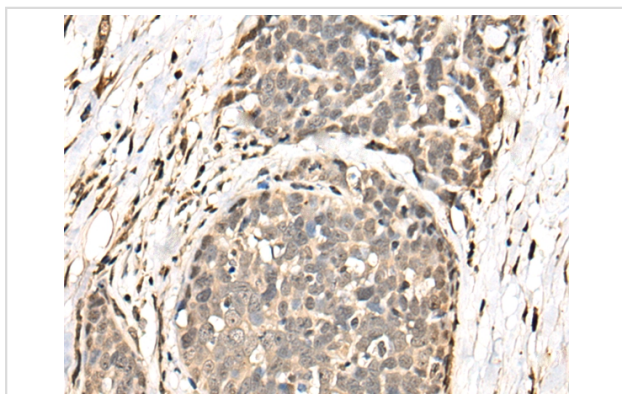
## Description

Product Name	BATF Antibody
Host Species	Rabbit
Clonality	Polyclonal
Purification	Antigen affinity purification
Applications	IHC
Species Reactivity	Hu
Specificity	The antibody detects endogenous levels of total BATF protein.
Immunogen Type	peptide
Immunogen Description	Full length fusion protein of human BATF
Target Name	BATF
Other Names	SFA2; B-ATF; BATF1; SFA-2
Accession No.	Swiss-Prot:Q16520NCBI Gene ID:10538NCBI Protein:BC032294
Uniprot	Q16520
GeneID	10538;
Concentration	1mg/ml
Formulation	Rabbit IgG in pH7.4 PBS, 0.05% NaN <sub>3</sub> , 40% Glycerol.
Storage	Store at -20°C

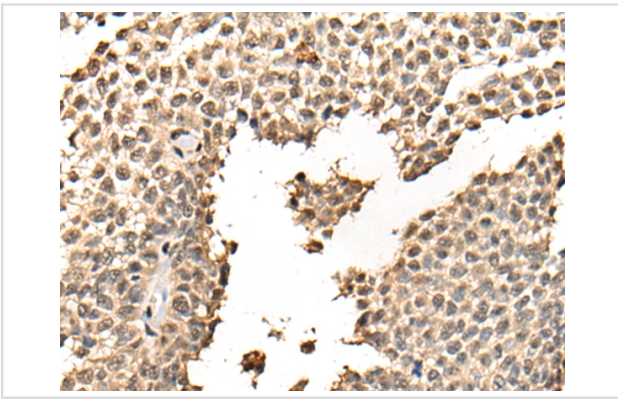
## Application Details

Immunohistochemistry: 1: 30-150

## Images



The image on the left is immunohistochemistry of paraffin-embedded Human thyroid cancer tissue using 46333(BATF Antibody) at dilution 1/40, on the right is treated with fusion protein. (Original magnification: x200)



The image on the left is immunohistochemistry of paraffin-embedded Human ovarian cancer tissue using 46333(BATF Antibody) at dilution 1/40, on the right is treated with fusion protein. (Original magnification: x200)

## Background

The protein encoded by this gene is a nuclear basic leucine zipper protein that belongs to the AP-1/ATF superfamily of transcription factors. The leucine zipper of this protein mediates dimerization with members of the Jun family of proteins. This protein is thought to be a negative regulator of AP-1/ATF transcriptional events.

Note: This product is for in vitro research use only