

## EBF3 antibody

Catalog No: #31938

Package Size: #31938-1 50ul #31938-2 100ul

Orders: [order@signalwayantibody.com](mailto:order@signalwayantibody.com)Support: [tech@signalwayantibody.com](mailto:tech@signalwayantibody.com)

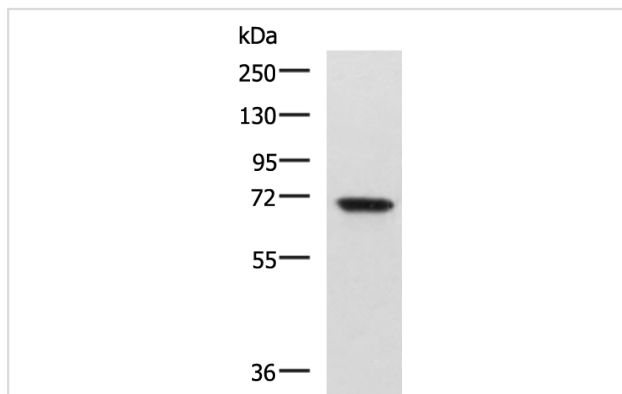
## Description

Product Name	EBF3 antibody
Host Species	Rabbit
Clonality	Polyclonal
Purification	Antigen affinity purification
Applications	WB, IHC
Species Reactivity	Hu, Ms
Immunogen Description	Fusion protein of human EBF3
Target Name	EBF3
Other Names	COE3; OE-2; EBF-3; HADD5; O/E-2
Accession No.	NCBI Protein#:BC126130
Uniprot	Q9H4W6
GeneID	253738
Calculated MW	65 kDa
Concentration	0.8mg/ml
Formulation	pH7.4 PBS, 0.05% NaN3, 40% Glycerol
Storage	Store at -20°C/1 year

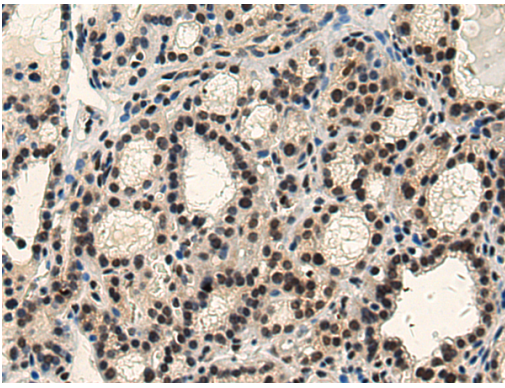
## Application Details

WB dilution:1:1000-1:5000IHC dilution:1:100-1:300

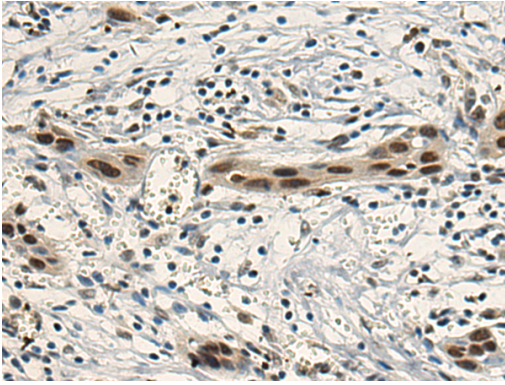
## Images



Gel: 8%SDS-PAGE, Lysate: 40 µg, Lane: A172 cell lysate, Primary antibody:EBF3 Antibody at dilution 1/800, Secondary antibody: Goat anti rabbit IgG at 1/5000 dilution, Exposure time: 2 minutes



The image is immunohistochemistry of paraffin-embedded Human thyroid cancer tissue using (EBF3 Antibody) at dilution 1/110.



The image is immunohistochemistry of paraffin-embedded Human esophagus cancer tissue using (EBF3 Antibody) at dilution 1/110.

## Background

This gene encodes a member of the early B-cell factor (EBF) family of DNA binding transcription factors. EBF proteins are involved in B-cell differentiation, bone development and neurogenesis, and may also function as tumor suppressors. The encoded protein inhibits cell survival through the regulation of genes involved in cell cycle arrest and apoptosis, and aberrant methylation or deletion of this gene may play a role in multiple malignancies including glioblastoma multiforme and gastric carcinoma.

Note: This product is for in vitro research use only