

FOXQ1 antibody

Catalog No: #31962

Package Size: #31962-1 50ul #31962-2 100ul

Orders: order@signalwayantibody.com

Support: tech@signalwayantibody.com

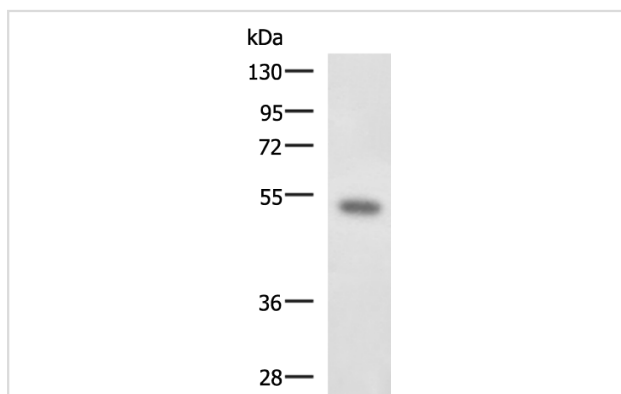
Description

Product Name	FOXQ1 antibody
Host Species	Rabbit
Clonality	Polyclonal
Purification	Antigen affinity purification
Applications	WB, IHC
Species Reactivity	Hu
Immunogen Description	Synthetic peptide of human FOXQ1
Target Name	FOXQ1
Other Names	HFH1
Accession No.	NCBI Protein#:NP_150285
Uniprot	Q9C009
GeneID	94234
Calculated MW	42 kDa
Concentration	0.7mg/ml
Formulation	pH7.4 PBS, 0.05% NaN3, 40% Glycerol
Storage	Store at -20°C/1 year

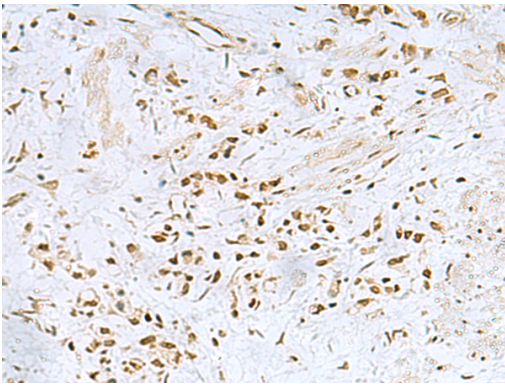
Application Details

WB dilution:1:500-1:2000IHC dilution:1:25-1:50

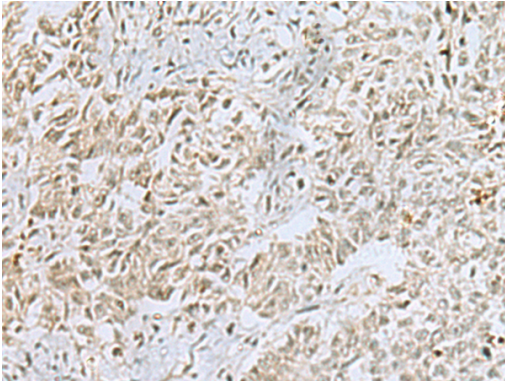
Images



Gel: 8%SDS-PAGE, Lysate: 40 µg, Lane: Mouse kidney tissue lysate, Primary antibody:FOXQ1 Antibody at dilution 1/650, Secondary antibody: Goat anti rabbit IgG at 1/5000 dilution, Exposure time: 10 seconds



The image is immunohistochemistry of paraffin-embedded Human gastric cancer tissue using (FOXQ1 Antibody) at dilution 1/25.



The image is immunohistochemistry of paraffin-embedded Human ovarian cancer tissue using (FOXQ1 Antibody) at dilution 1/25.

Background

FOXQ1 is a member of the FOX gene family, which is characterized by a conserved 110-amino acid DNA-binding motif called the forkhead or winged helix domain. FOX genes are involved in embryonic development, cell cycle regulation, tissue-specific gene expression, cell signaling, and tumorigenesis (Bieller et al., 2001 [PubMed 11747606]).

Note: This product is for in vitro research use only