

BBS12 Antibody

Catalog No: #46337

Orders: order@signalwayantibody.comSupport: tech@signalwayantibody.com

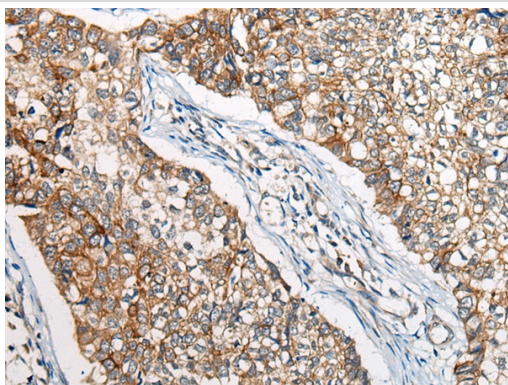
Description

Product Name	BBS12 Antibody
Host Species	Rabbit
Clonality	Polyclonal
Purification	Antigen affinity purification
Applications	IHC
Species Reactivity	Hu
Specificity	The antibody detects endogenous levels of total BBS12 protein.
Immunogen Type	peptide
Immunogen Description	Synthetic peptide corresponding to internal residues of human BBS12
Target Name	BBS12
Other Names	C4orf24
Accession No.	Swiss-Prot:Q6ZW61NCBI Gene ID:166379NCBI Protein:NP_689831
Uniprot	Q6ZW61
GeneID	166379;
Concentration	1.4mg/ml
Formulation	Rabbit IgG in pH7.4 PBS, 0.05% NaN ₃ , 40% Glycerol.
Storage	Store at -20°C

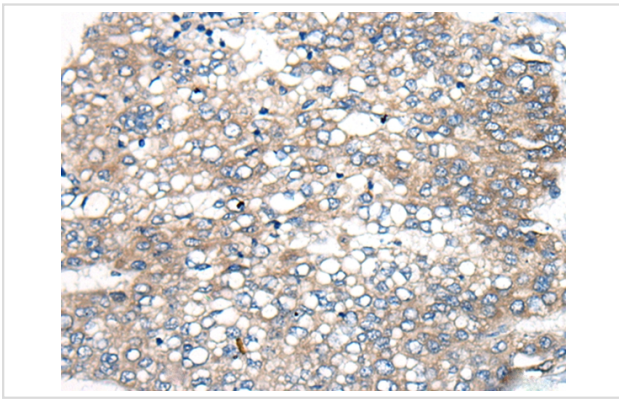
Application Details

Immunohistochemistry: 1: 40-200

Images



The image on the left is immunohistochemistry of paraffin-embedded Human lung cancer tissue using 46337(BBS12 Antibody) at dilution 1/50, on the right is treated with synthetic peptide. (Original magnification: x200)



The image on the left is immunohistochemistry of paraffin-embedded Human liver cancer tissue using 46337(BBS12 Antibody) at dilution 1/50, on the right is treated with synthetic peptide. (Original magnification: x200)

Background

The protein encoded by this gene is part of a complex that is involved in membrane trafficking. The encoded protein is a molecular chaperone that aids in protein folding upon ATP hydrolysis. This protein also plays a role in adipocyte differentiation. Defects in this gene are a cause of Bardet-Biedl syndrome type 12. Two transcript variants encoding the same protein have been found for this gene.

Note: This product is for in vitro research use only