

BLVRA Antibody

Catalog No: #46348

Orders: order@signalwayantibody.comSupport: tech@signalwayantibody.com

Description

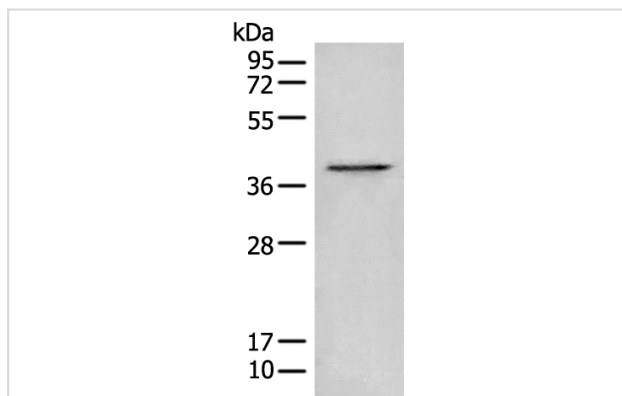
Product Name	BLVRA Antibody
Host Species	Rabbit
Clonality	Polyclonal
Purification	Antigen affinity purification
Applications	WB IHC
Species Reactivity	Hu Ms
Specificity	The antibody detects endogenous levels of total BLVRA protein.
Immunogen Type	peptide
Immunogen Description	Full length fusion protein of human BLVRA
Target Name	BLVRA
Other Names	BVR; BLVR; BVRA
Accession No.	Swiss-Prot:P53004NCBI Gene ID:644NCBI Protein:BC008456
Uniprot	P53004
GeneID	644;
Calculated MW	33 kDa
Concentration	0.9mg/ml
Formulation	Rabbit IgG in pH7.4 PBS, 0.05% NaN ₃ , 40% Glycerol.
Storage	Store at -20°C

Application Details

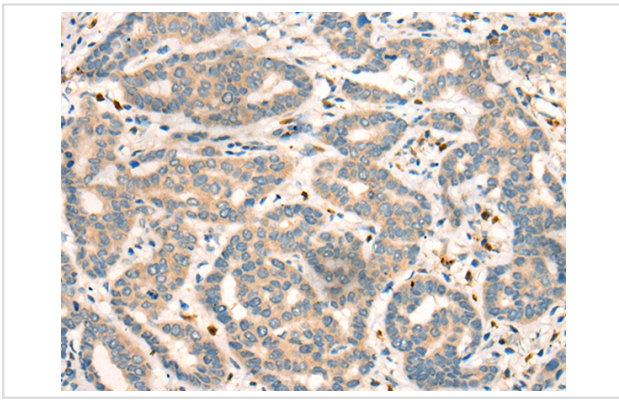
Western blotting: 1:200-1:1000

Immunohistochemistry: 1: 25-100

Images



Gel: 12%SDS-PAGE
lysate: 40 µg, Lane: Mouse kidney tissue lysate,
Primary antibody: 46348 (BLVRA Antibody) at dilution
1/400
Secondary antibody: Goat anti rabbit IgG at 1/8000 dilution,
Exposure time: 10 seconds



The image on the left is immunohistochemistry of paraffin-embedded Human liver cancer tissue using 46348(BLVRA Antibody) at dilution 1/40, on the right is treated with fusion protein. (Original magnification: x200)

Background

The protein encoded by this gene belongs to the biliverdin reductase family, members of which catalyze the conversion of biliverdin to bilirubin in the presence of NADPH or NADH. Mutations in this gene are associated with hyperbiliverdinemia. Alternatively spliced transcript variants have been found for this gene.

Note: This product is for in vitro research use only