

BOLA1 Antibody

Catalog No: #46350

Orders: order@signalwayantibody.comSupport: tech@signalwayantibody.com

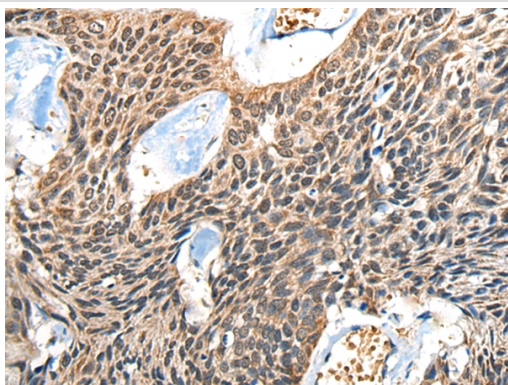
Description

Product Name	BOLA1 Antibody
Host Species	Rabbit
Clonality	Polyclonal
Purification	Antigen affinity purification
Applications	IHC
Species Reactivity	Hu
Specificity	The antibody detects endogenous levels of total BOLA1 protein.
Immunogen Type	peptide
Immunogen Description	Full length fusion protein of human BOLA1
Target Name	BOLA1
Other Names	CGI-143
Accession No.	Swiss-Prot:Q9Y3E2NCBI Gene ID:51027NCBI Protein:BC063405
Uniprot	Q9Y3E2
GeneID	51027;
Concentration	1.2mg/ml
Formulation	Rabbit IgG in pH7.4 PBS, 0.05% NaN ₃ , 40% Glycerol.
Storage	Store at -20°C

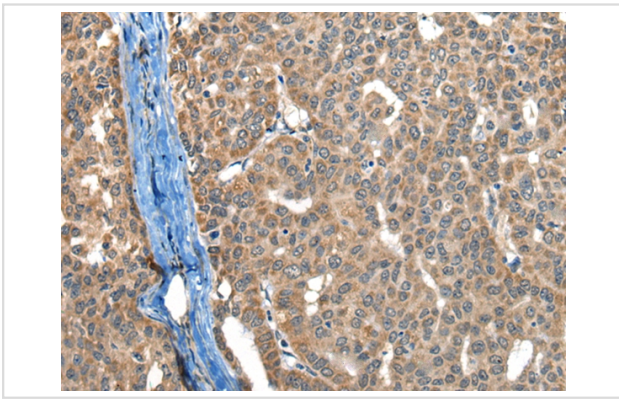
Application Details

Immunohistochemistry: 1: 40-200

Images



The image on the left is immunohistochemistry of paraffin-embedded Human esophagus cancer tissue using 46350(BOLA1 Antibody) at dilution 1/50, on the right is treated with fusion protein. (Original magnification: x200)



The image on the left is immunohistochemistry of paraffin-embedded Human liver cancer tissue using 46350(BOLA1 Antibody) at dilution 1/50, on the right is treated with fusion protein. (Original magnification: x200)

Background

BOLA1 (BoIA-like protein 1), also known as CGI-143, is a member of the BoIA/yrbA family of proteins. Members of this family are homologs of the *Escherichia coli* protein, BoIA. BoIA-like proteins are evolutionarily conserved from prokaryotes to eukaryotes and are believed to play a role in cell-cycle regulation or cell proliferation possibly via some sort of transcription regulation of other genes. In addition, BoIA-like proteins may contain nucleic-acid binding properties, as is suggested by a fold structure that is similar to the KH-fold, a motif known to participate in nucleic-acid binding. Characteristic of BoIA-like proteins which typically consist of approximately 100 amino acids, BOLA1 is a 137 amino acid protein.

Note: This product is for in vitro research use only