

## BRD8 Antibody

Catalog No: #46353

Orders: [order@signalwayantibody.com](mailto:order@signalwayantibody.com)Support: [tech@signalwayantibody.com](mailto:tech@signalwayantibody.com)

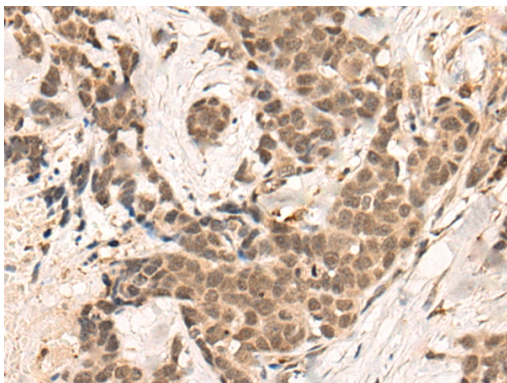
## Description

Product Name	BRD8 Antibody
Host Species	Rabbit
Clonality	Polyclonal
Purification	Antigen affinity purification
Applications	IHC
Species Reactivity	Hu Ms
Specificity	The antibody detects endogenous levels of total BRD8 protein.
Immunogen Type	peptide
Immunogen Description	Synthetic peptide corresponding to internal residues of human BRD8
Target Name	BRD8
Other Names	SMAP; p120; SMAP2
Accession No.	Swiss-Prot:Q9H0E9NCBI Gene ID:10902NCBI Protein:NP_001157798
Uniprot	Q9H0E9
GeneID	10902;
Concentration	0.8mg/ml
Formulation	Rabbit IgG in pH7.4 PBS, 0.05% NaN <sub>3</sub> , 40% Glycerol.
Storage	Store at -20°C

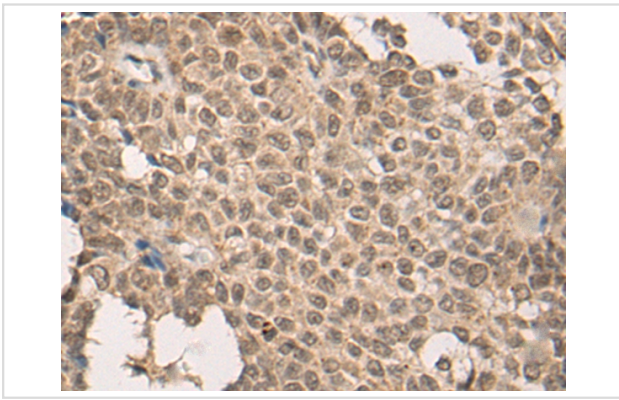
## Application Details

Immunohistochemistry: 1: 25-100

## Images



The image on the left is immunohistochemistry of paraffin-embedded Human thyroid cancer tissue using 46353(BRD8 Antibody) at dilution 1/35, on the right is treated with synthetic peptide. (Original magnification: x200)



The image on the left is immunohistochemistry of paraffin-embedded Human ovarian cancer tissue using 46353(BRD8 Antibody) at dilution 1/35, on the right is treated with synthetic peptide. (Original magnification: x200)

## Background

The protein encoded by this gene interacts with thyroid hormone receptor in a ligand-dependent manner and enhances thyroid hormone-dependent activation from thyroid response elements. This protein contains a bromodomain and is thought to be a nuclear receptor coactivator. Multiple alternatively spliced transcript variants that encode distinct isoforms have been identified.

Note: This product is for in vitro research use only