

BRF1 Antibody

Catalog No: #46355

Orders: order@signalwayantibody.comSupport: tech@signalwayantibody.com

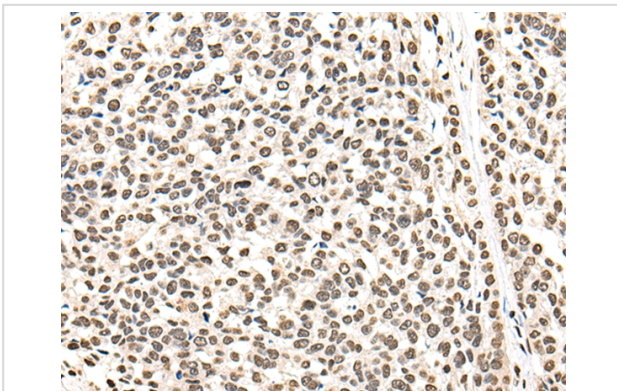
Description

Product Name	BRF1 Antibody
Host Species	Rabbit
Clonality	Polyclonal
Purification	Antigen affinity purification
Applications	IHC
Species Reactivity	Hu
Specificity	The antibody detects endogenous levels of total BRF1 protein.
Immunogen Type	peptide
Immunogen Description	Synthetic protein corresponding to residues near the N terminal of human BRF1
Target Name	BRF1
Other Names	BRF; CFDS; hBRF; BRF-1; GTF3B; TAF3C; TAF3B2; TF3B90; TAFIII90; TFIIB90; HEL-S-76p
Accession No.	Swiss-Prot:Q92994NCBI Gene ID:2972NCBI Protein:BC016743
Uniprot	Q92994
GeneID	2972;
Concentration	0.9mg/ml
Formulation	Rabbit IgG in pH7.4 PBS, 0.05% NaN ₃ , 40% Glycerol.
Storage	Store at -20°C

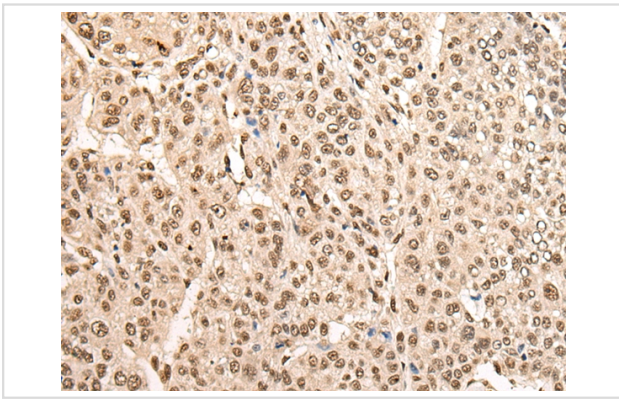
Application Details

Immunohistochemistry: 1: 25-100

Images



The image on the left is immunohistochemistry of paraffin-embedded Human esophagus cancer tissue using 46355(BRF1 Antibody) at dilution 1/35, on the right is treated with fusion protein. (Original magnification: x200)



The image on the left is immunohistochemistry of paraffin-embedded Human liver cancer tissue using 46355(BRF1 Antibody) at dilution 1/35, on the right is treated with fusion protein. (Original magnification: x200)

Background

This gene encodes one of the three subunits of the RNA polymerase III transcription factor complex. This complex plays a central role in transcription initiation by RNA polymerase III on genes encoding tRNA, 5S rRNA, and other small structural RNAs. The gene product belongs to the TF2B family. Several alternatively spliced variants encoding different isoforms, that function at different promoters transcribed by RNA polymerase III, have been identified.

Note: This product is for in vitro research use only