

BRF2 Antibody

Catalog No: #46356

Orders: order@signalwayantibody.com

Support: tech@signalwayantibody.com

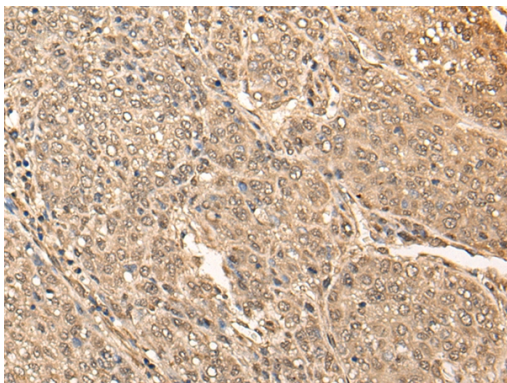
Description

Product Name	BRF2 Antibody
Host Species	Rabbit
Clonality	Polyclonal
Purification	Antigen affinity purification
Applications	IHC
Species Reactivity	Hu
Specificity	The antibody detects endogenous levels of total BRF2 protein.
Immunogen Type	peptide
Immunogen Description	Synthetic protein corresponding to residues near the C terminal of human BRF2
Target Name	BRF2
Other Names	BRFU; TFIIIB50
Accession No.	Swiss-Prot:Q9HAW0NCBI Gene ID:55290NCBI Protein:BC010648
Uniprot	Q9HAW0
GeneID	55290;
Concentration	1mg/ml
Formulation	Rabbit IgG in pH7.4 PBS, 0.05% NaN ₃ , 40% Glycerol.
Storage	Store at -20°C

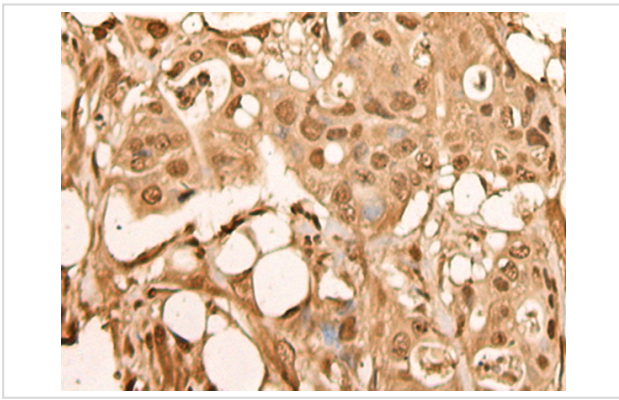
Application Details

Immunohistochemistry: 1: 30-150

Images



The image on the left is immunohistochemistry of paraffin-embedded Human liver cancer tissue using 46356(BRF2 Antibody) at dilution 1/40, on the right is treated with fusion protein. (Original magnification: x200)



The image on the left is immunohistochemistry of paraffin-embedded Human colorectal cancer tissue using 46356(BRF2 Antibody) at dilution 1/40, on the right is treated with fusion protein. (Original magnification: x200)

Background

This gene encodes one of the multiple subunits of the RNA polymerase III transcription factor complex required for transcription of genes with promoter elements upstream of the initiation site. The product of this gene, a TFIIIB-like factor, is directly recruited to the TATA-box of polymerase III small nuclear RNA gene promoters through its interaction with the TATA-binding protein.

Note: This product is for in vitro research use only