

C21orf59 Antibody

Catalog No: #46370

Orders: order@signalwayantibody.com

Support: tech@signalwayantibody.com

Description

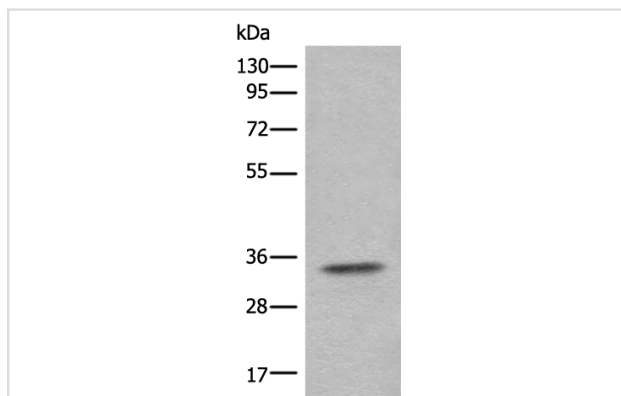
Product Name	C21orf59 Antibody
Host Species	Rabbit
Clonality	Polyclonal
Purification	Antigen affinity purification
Applications	WB IHC
Species Reactivity	Hu
Specificity	The antibody detects endogenous levels of total C21orf59 protein.
Immunogen Type	peptide
Immunogen Description	Full length fusion protein of human C21orf59
Target Name	C21orf59
Other Names	Kur; FBB18; CILD26; C21orf48
Accession No.	Swiss-Prot:P57076NCBI Gene ID:56683NCBI Protein:BC000709
Uniprot	P57076
GeneID	56683;
Calculated MW	33 kDa
Concentration	0.7mg/ml
Formulation	Rabbit IgG in pH7.4 PBS, 0.05% NaN ₃ , 40% Glycerol.
Storage	Store at -20°C

Application Details

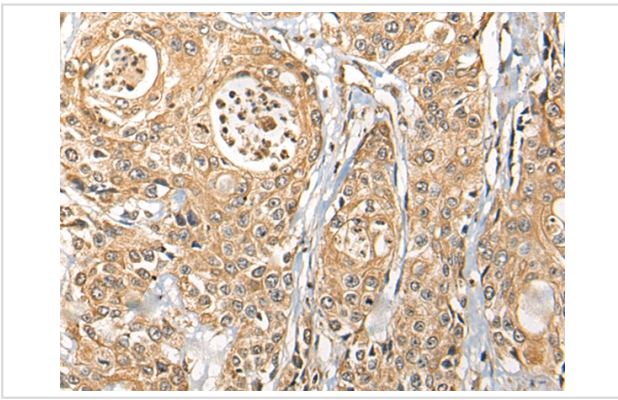
Western blotting: 1:200-1:1000

Immunohistochemistry: 1: 25-100

Images



Gel: 8%SDS-PAGE
 Lane: Human testis tissue lysate
 Primary antibody: 46370(C21orf59 Antibody) at dilution 1/2500
 Secondary antibody: Goat anti rabbit IgG at 1/8000 dilution
 Exposure time: 1 second



The image on the left is immunohistochemistry of paraffin-embedded Human prostate cancer tissue using 46370(C21orf59 Antibody) at dilution 1/30, on the right is treated with fusion protein. (Original magnification: x200)

Background

This gene a protein plays a critical role in dynein arm assembly and motile cilia function. Mutations in this gene result in primary ciliary dyskinesia.

Note: This product is for in vitro research use only