

## C2CD2 Antibody

Catalog No: #46371

Orders: order@signalwayantibody.com

Support: tech@signalwayantibody.com

## Description

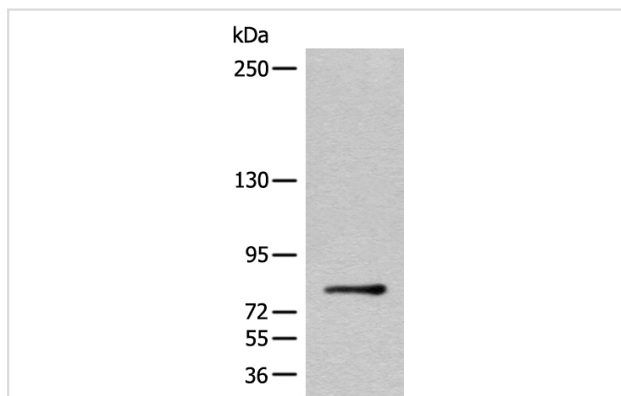
Product Name	C2CD2 Antibody
Host Species	Rabbit
Clonality	Polyclonal
Purification	Antigen affinity purification
Applications	WB IHC
Species Reactivity	Hu
Specificity	The antibody detects endogenous levels of total C2CD2 protein.
Immunogen Type	peptide
Immunogen Description	Synthetic protein corresponding to residues near the C terminal of human C2CD2
Target Name	C2CD2
Other Names	TMEM24L; C21orf25; C21orf258
Accession No.	Swiss-Prot:Q9Y426NCBI Gene ID:25966NCBI Protein:BC062323
Uniprot	Q9Y426
GeneID	25966;
Calculated MW	76 kDa
Concentration	1mg/ml
Formulation	Rabbit IgG in pH7.4 PBS, 0.05% NaN <sub>3</sub> , 40% Glycerol.
Storage	Store at -20°C

## Application Details

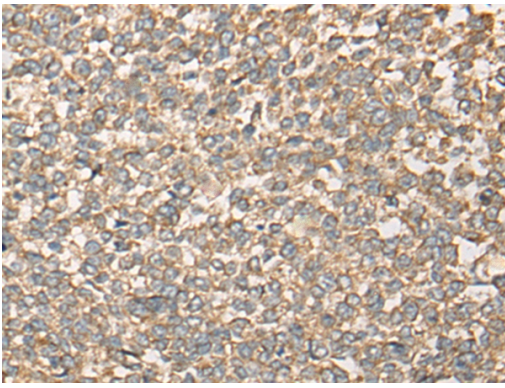
Western blotting: 1:200-1:1000

Immunohistochemistry: 1: 30-150

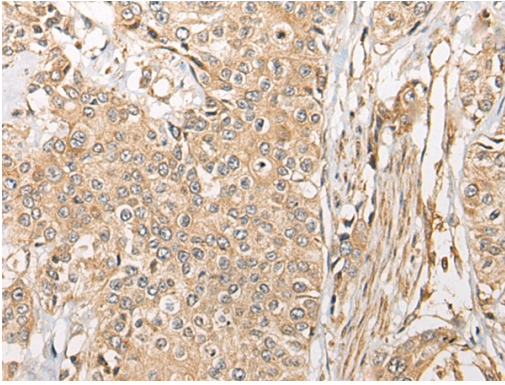
## Images



Gel: 6%SDS-PAGE  
 Lane: Human placenta tissue lysate  
 Primary antibody: 46371(C2CD2 Antibody) at dilution 1/400  
 Secondary antibody: Goat anti rabbit IgG at 1/8000  
 Exposure time: 1 minute



The image on the left is immunohistochemistry of paraffin-embedded Human esophagus cancer tissue using 46371(C2CD2 Antibody) at dilution 1/40, on the right is treated with fusion protein. (Original magnification: x200)



The image on the left is immunohistochemistry of paraffin-embedded Human prostate cancer tissue using 46371(C2CD2 Antibody) at dilution 1/40, on the right is treated with fusion protein. (Original magnification: x200)

## Background

C2CD2 is an 696 amino acid protien that is secreted. The C2CD2 gene product has been provisionally designated C2CD2 pending further characterization.

Note: This product is for in vitro research use only