

C4BPA Antibody

Catalog No: #46373

Orders: order@signalwayantibody.comSupport: tech@signalwayantibody.com

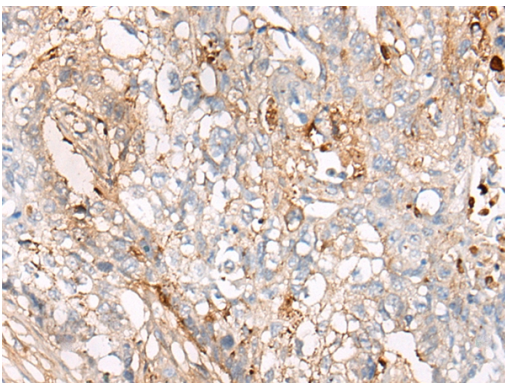
Description

Product Name	C4BPA Antibody
Host Species	Rabbit
Clonality	Polyclonal
Purification	Antigen affinity purification
Applications	IHC
Species Reactivity	Hu
Specificity	The antibody detects endogenous levels of total C4BPA protein.
Immunogen Type	peptide
Immunogen Description	Synthetic peptide corresponding to residues near the C terminal of human C4BPA
Target Name	C4BPA
Other Names	PRP; C4BP
Accession No.	Swiss-Prot:P04003 NCBI Gene ID:722NCBI Protein:NP_000706
Uniprot	P04003
GeneID	722;
Concentration	1.1mg/ml
Formulation	Rabbit IgG in pH7.4 PBS, 0.05% NaN ₃ , 40% Glycerol.
Storage	Store at -20°C

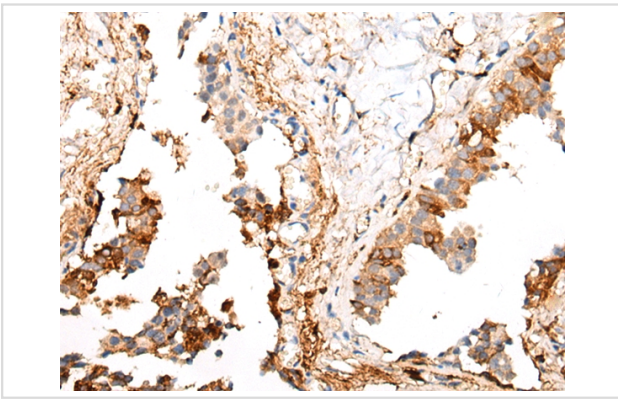
Application Details

Immunohistochemistry: 1: 25-100

Images



The image on the left is immunohistochemistry of paraffin-embedded Human lung cancer tissue using 46373(C4BPA Antibody) at dilution 1/45, on the right is treated with synthetic peptide. (Original magnification: x200)



The image on the left is immunohistochemistry of paraffin-embedded Human breast cancer tissue using 46373(C4BPA Antibody) at dilution 1/45, on the right is treated with synthetic peptide. (Original magnification: x200)

Background

This gene encodes a member of a superfamily of proteins composed predominantly of tandemly arrayed short consensus repeats of approximately 60 amino acids. Along with a single, unique beta-chain, seven identical alpha-chains encoded by this gene assemble into the predominant isoform of C4b-binding protein, a multimeric protein that controls activation of the complement cascade through the classical pathway. The genes encoding both alpha and beta chains are located adjacent to each other on human chromosome 1 in the regulator of complement activation gene cluster. Two pseudogenes of this gene are also found in the cluster.

Note: This product is for in vitro research use only