

C4BPB Antibody

Catalog No: #46374

Orders: order@signalwayantibody.com

Support: tech@signalwayantibody.com

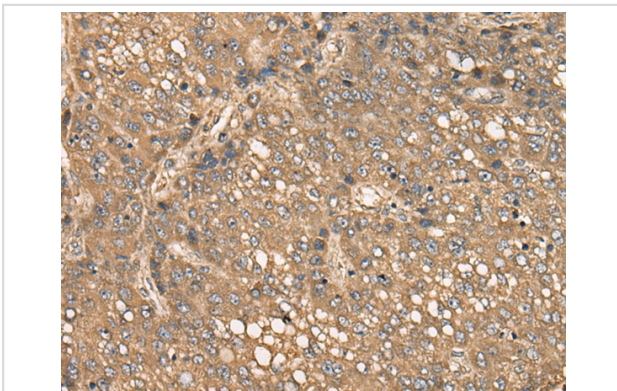
Description

Product Name	C4BPB Antibody
Host Species	Rabbit
Clonality	Polyclonal
Purification	Antigen affinity purification
Applications	IHC
Species Reactivity	Hu
Specificity	The antibody detects endogenous levels of total C4BPB protein.
Immunogen Type	peptide
Immunogen Description	Synthetic protein corresponding to residues near the C terminal of human C4BPB
Target Name	C4BPB
Other Names	C4BP
Accession No.	Swiss-Prot:P20851NCBI Gene ID:725NCBI Protein:BC005378
Uniprot	P20851
GeneID	725;
Concentration	0.8mg/ml
Formulation	Rabbit IgG in pH7.4 PBS, 0.05% NaN ₃ , 40% Glycerol.
Storage	Store at -20°C

Application Details

Immunohistochemistry: 1: 30-150

Images



The image on the left is immunohistochemistry of paraffin-embedded Human liver cancer tissue using 46374(C4BPB Antibody) at dilution 1/35, on the right is treated with fusion protein. (Original magnification: x200)

Background

This gene encodes a member of a superfamily of proteins composed predominantly of tandemly arrayed short consensus repeats of approximately 60 amino acids. A single, unique beta-chain encoded by this gene assembles with seven identical alpha-chains into the predominant isoform of C4b-binding protein, a multimeric protein that controls activation of the complement cascade through the classical pathway. C4b-binding protein has a regulatory role in the coagulation system also, mediated through the beta-chain binding of protein S, a vitamin K-dependent protein that serves as a

cofactor of activated protein C. The genes encoding both alpha and beta chains are located adjacent to each other on human chromosome 1 in the regulator of complement activation gene cluster. Alternative splicing gives rise to multiple transcript variants.?

Note: This product is for in vitro research use only